

NEW YORK UNIVERSITY BULLETIN

Volume LVII

July 15, 1957

Number 39



ANNOUNCEMENT • 1957-1958

College of Medicine

550 FIRST AVENUE • NEW YORK 16, NEW YORK

COPYRIGHT STATEMENT: Reproductions are provided for private study, scholarship, and research uses only, in accordance with the Copyright law (Title 17, United States Code). Reproductions are the sole and exclusive property of The Lillian and Clarence de la Chapelle Medical Archives at NYU and may not be reproduced in any fashion or used for any purpose other than private scholarship without the express written consent of The Lillian and Clarence de la Chapelle Medical Archives at NYU.

22183A
100
A.
82-728

You will find this bulletin useful as a reference during your attendance at New York University. Please preserve it for this purpose.

NOTICE

The program and requirements set forth in this bulletin are necessarily subject to change without notice at any time at the discretion of the administration.

NEW YORK UNIVERSITY BULLETIN

Vol. LVII, No. 39

July 15, 1957

Published weekly from December through May for twenty-five consecutive weeks, and semiweekly from June through August for thirteen consecutive weeks, by New York University, Main Building, 100 Washington Square East, New York 3, N.Y. Second-class mail privileges authorized at New York, N.Y.

NEW YORK UNIVERSITY

College of Medicine

ANNOUNCEMENT FOR THE
ONE HUNDRED AND EIGHTEENTH
SESSION

1957-1958

The College of Medicine is a unit of the
NEW YORK UNIVERSITY-BELLEVUE
MEDICAL CENTER
550 FIRST AVENUE • NEW YORK 16
NEW YORK

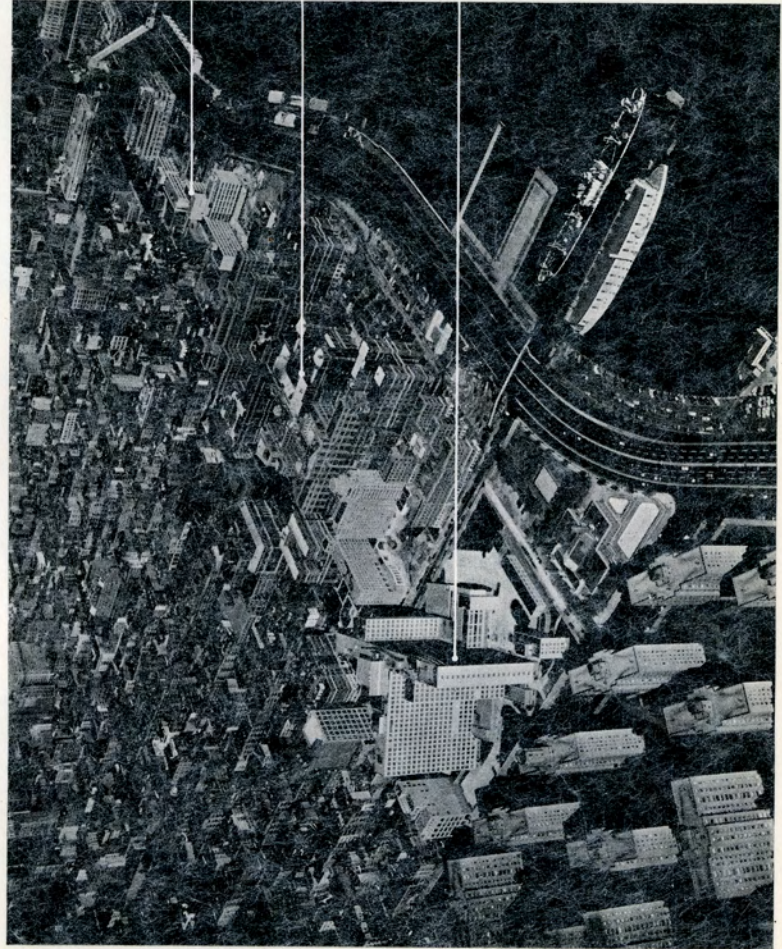
ARCHIVES
001
.A
1957-58

NEW YORK UNIVERSITY
College of Medicine

ANNOUNCEMENT FOR THE
ONE HUNDRED AND EIGHTEENTH
SESSION

NEW YORK UNIVERSITY - BELLEVUE
MEDICAL CENTER
150 FIRST AVENUE - NEW YORK 10
NEW YORK

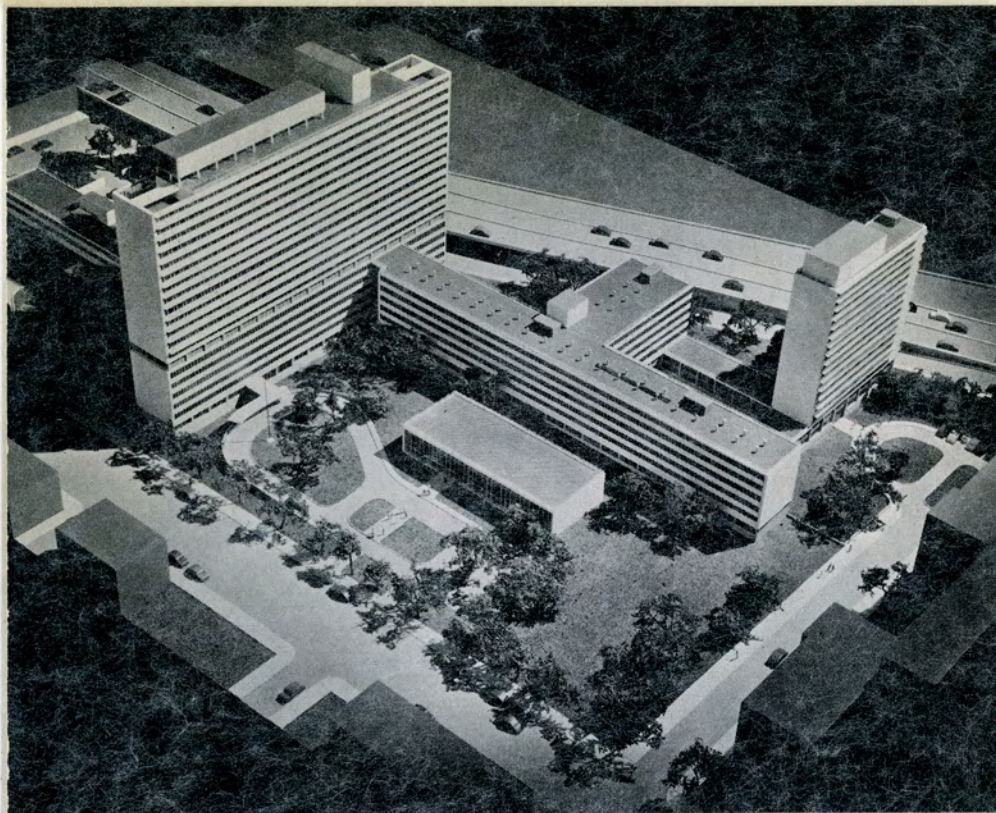
NEW YORK UNIVERSITY
ARCHIVES
SCHOOL OF MEDICINE



NEW YORK UNIVERSITY BUILDINGS
Medical Science Building
Institute of Physical Medicine
and Rehabilitation

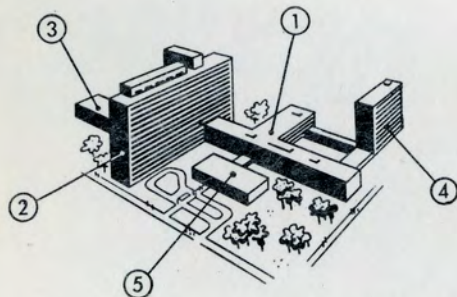
NEW YORK CITY
Bellevue Hospital
Bellevue Schools of Nursing

UNITED STATES GOVERNMENT
New York Veterans Administration
Hospital



THE NEW BUILDINGS FOR THE UNIVERSITY SECTION

The University section of the Medical Center as it will appear from the air upon completion. First Avenue and East Thirtieth Street intersect in the foreground while the East River Drive curves along the background.



KEY SHOWING PRINCIPAL UNITS OF THE UNIVERSITY SECTION

1. Medical Science Building housing the College of Medicine and Post-Graduate Medical School
2. University Hospital
3. Institute of Physical Medicine and Rehabilitation and University clinics
4. Hall of Residence
5. Alumni Hall

INDEX

	PAGE
Administration, Officers of	
New York University	6
New York University-Bellevue Medical Center	8
College of Medicine	10
Board of Trustees of the University	7
Calendar	5
Courses, Description of (members of faculty listed under each department)	
Anatomy	38
Biochemistry	39
Dermatology and Syphilology	40
Forensic Medicine	45
History of Medicine—Elective	46
Medical Statistics	47
Medicine	48
Microbiology	53
Neurosurgery	54
Obstetrics and Gynecology	55
Ophthalmology	58
Orthopedic Surgery	61
Otorhinolaryngology	63
Pathology	65
Pediatrics	67
Pharmacology	70
Physical Medicine and Rehabilitation	71
Physiology	74
Preventive Medicine	75
Psychiatry and Neurology	77
Radiology	81
Surgery	83
Urology	86
General Information	
Admission Requirements	15
Advanced Standing	17
Advancement in Course	20
Affiliated Hospitals	13
Applicants, Manner of Choosing	17
Application, Method of Making	16
Buildings	12
Discipline	28
Electives	35
Equipment	28
Examinations	20
Faculty (listed under each department)	
Fees	22

	PAGE
Fellowships	23
Foreign Students	17
Graduate Medical Education	32
Graduation Requirements	21
Historical Sketch	11
Honors and Merit Scholarship Programs	33
Instruction Plan	32
Lectureships	30
Libraries	12
Licensure	21
Loan Funds	24
Matriculation	18
New York University	6
New York University-Bellevue Medical Center	11
Nursing, Division of	32
Prizes	26
Regional Hospital Plan	15
Registration	18
Registration of Veterans	18
Required Studies	37
Scholarships	24
Scholarships for Ph.D. Candidates	35
Selective Service	20
Societies	31
Student Assembly Day	30
Student Government	31
Student Health	29
Transcripts	28
Visiting Professorship	31

CALENDAR

*All dates are inclusive**First and Second Years*

Registration	Thursday, September 5, 1957
	Friday, September 6, 1957
First Trimester	September 9–November 30, 1957 (11 weeks) ¹
Second Trimester	December 2, 1957–March 1, 1958 (11 weeks) ¹
Third Trimester	March 3–May 17, 1958 (10 weeks) ¹
Pre-examination Week	May 19–24, 1958
Examination Week	May 26–31, 1958

Third Year

Registration	Friday, May 31, 1957
Academic Year	June 3, 1957–May 24, 1958
Examination Week	May 26–31, 1958

Fourth Year

Registration	Friday, September 6, 1957
Academic Year	September 9, 1957–May 17, 1958
Examination Week	May 19–24, 1958
Last Day Exercises	Tuesday, June 3, 1958
Graduation	Wednesday, June 4, 1958

HOLIDAY SCHEDULE²

Election Day—Tuesday, November 5, 1957
 Thanksgiving Recess—Thursday, November 28–Sunday, December 1, 1957
 Christmas Recess—Tuesday, December 24, 1957–Thursday, January 2, 1958
 Washington's Birthday—Saturday, February 22, 1958
 Easter Recess—Monday, March 31–Sunday, April 6, 1958
 Memorial Day—Friday, May 30, 1958

¹ Number of weeks in a trimester. *Excludes* holiday time.² Students in the third and fourth years are held responsible during holidays for clinical assignments—subject to the discretion of the departmental chairman.

NEW YORK UNIVERSITY

New York University, founded in 1831, is a nonsectarian and privately endowed institution, not to be confused with other institutions of similar name, both state and municipal, which are tax-supported.

Its fourteen schools, colleges, and divisions offer programs covering the widest range of general, preprofessional, and professional training. They occupy six centers in New York City. All are open to qualified students without regard to race, creed, or national origin. All are co-educational except the University College of Arts and Science and the Day Division of the College of Engineering, both on the University Heights campus, where men only are admitted. Most schools function on a year-round basis, with fall, spring, and summer admissions. The University also offers an extensive program of undergraduate and graduate studies in the evening.

Its students are drawn not only from the metropolitan area but from every section of the country and from all over the world. The faculty, numbering some 3,900 men and women, both full and part time, is engaged in an extensive program of research activity as well as classroom instruction and advisement. Grounds and buildings of the University are estimated at a current value of \$105,281,000, and its libraries contain nearly 1,100,000 volumes. Forward-looking policies are represented in the recent construction of new law and medical centers, by the projected plans for additional academic and student service facilities, and by the addition of new courses and new programs of study in all the schools and colleges of the University.

The University is governed by a self-perpetuating Board of Trustees composed of prominent citizens. The several divisions are under a central administration of which the President is the head, while each unit is locally managed by its own administrative staff.

OFFICERS OF ADMINISTRATION OF THE UNIVERSITY

Carroll V. Newsom, A.B., A.M., PH.D., LITT.D., L.H.D., PD.D., SC.D., LL.D.,

President

John E. Ivey, Jr., B.S., PH.D., LL.D., *Executive Vice President*

Harold O. Voorhis, B.S., A.M., LL.D., *Vice President and Secretary*

Frank L. Howley, B.S. IN COM., M.D. (HON.), LL.D., *Vice President for University Development*

George E. Armstrong, A.B., M.D., LL.D., *Vice President for Medical Affairs*

George F. Baughman, B.S.B.A., LL.B., A.M., SC.D. (HON.), *Vice President for Business Affairs and Treasurer*

Arthur L. Brandon, A.B., A.M., LL.D., *Vice President for University Relations*

Ray F. Harvey, A.B., A.M., PH.D., *Director of the Budget*

Ernest L. Hettich, A.B., A.M., PH.D., *Director of the Libraries*

Elwood C. Kastner, B.S., LL.D., *Dean of Registration and Financial Aid*

Thomas P. Robinson, A.B., A.M., PH.D., *Director of Admissions*

BOARD OF TRUSTEES OF THE UNIVERSITY

Craig S. Bartlett, B.S. IN COM., M.B.A.	David Sarnoff, D.C.S., D.ENG., LITT.D., L.H.D., SC.D., LL.D.
Cass Canfield, A.B.	Royal A. Schaaf, M.D., SC.D.
*William E. Cotter, LL.B., D.C.S., LL.D.	John M. Schiff, A.B.; A.B. [OXON.], A.M.
Charles R. Cox, B.C.S., D.C.S.	William T. Schwendler, B.S. IN M.E., D.ENG.
Fred J. Emmerich, D.C.S.	†Hudson R. Searing, B.S. IN E.E.
Lawrence Fertig, A.B., A.M.	Malcolm D. Simpson, B.C.S.
Arthur B. Foye, B.C.S.	John I. Snyder, Jr., B.S.
Paul H. Hudson, B.C.S., LL.D., C.P.A.	Ralph W. Sockman, A.B., A.M., PH.D., D.C.LITT., D.D., LITT.D., L.H.D., S.T.D., LL.D.
Robert Lehman, A.B.	W. Paul Stillman, LL.D.
Samuel D. Leidesdorf, L.H.D.	Alan M. Stroock, A.B., LL.B.
John Lowry, B.S., C.E.	Albert E. Thiele, B.C.S.
James L. Madden, A.B., A.M., J.D., LL.D., <i>Vice Chairman</i>	David Tishman, LL.B., LL.M.
Alexander C. Nagle	L. A. Van Bomel, B.S. IN C.E.
J. Wilson Newman, B.S., J.D., LL.D.	‡Arthur T. Vanderbilt, A.B., A.M., LL.B., LL.D., D.C.L.
Carroll V. Newsom, A.B., A.M., PH.D., LITT.D., L.H.D., PD.D., SC.D., LL.D.	William A. Wachenfeld, LL.B., LL.D.
Charles W. Nichols, Jr.	George W. Whiteside, B.S., LL.B.
John E. Raasch, B.C.S.	Francis L. Whitmarsh, A.B.
William E. Robinson, B.C.S.	
George E. Roosevelt, A.B., <i>Chair- man</i>	

HONORARY MEMBERS

William W. Brush, B.S., M.S., C.E.	James D. Mooney, B.S., B.S. IN MINING ENG., M.E., D.ENG.
Edwin L. Garvin, A.B., LL.B., LL.D.	

* Died August 15, 1957.

† Died June 26, 1957.

‡ Died June 16, 1957.

NEW YORK UNIVERSITY-BELLEVUE
MEDICAL CENTER

MEDICAL CENTER BOARD

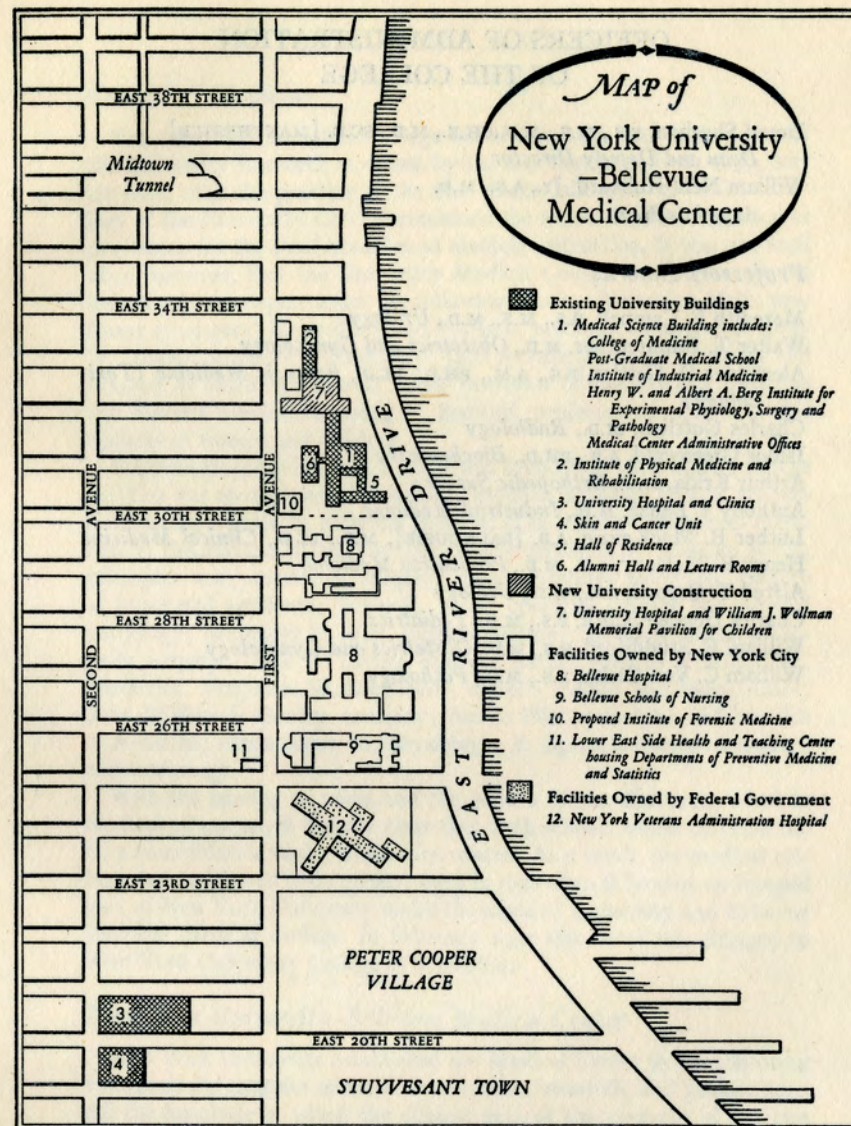
Samuel D. Leidesdorf, L.H.D., *Chairman*
Lloyd W. Elliott, D.ENG., *Vice Chairman*
Lawrence C. Marshall, *Treasurer*
Herbert L. Spencer, B.S. (M.E.), A.M., PH.D., L.H.D., LL.D., *Secretary*
George A. Brownell, A.B., A.M., LL.B.
Cass Canfield, A.B.
Nevil Ford, B.S.
Bernard F. Gimbel, B.S. (ECON.), D.C.S., LL.D.
Charles C. Harris
Orwill V. W. Hawkins, PH.B., LL.B.
R. H. Kress
Charles S. McVeigh, A.B., LL.B.
Bayard F. Pope, A.B.
John I. Snyder, Jr., B.S.

HONORARY TRUSTEES

Harris A. Dunn, B.S.
F. Abbot Goodhue, A.B.
LeRoy E. Kimball, A.B., A.M., LL.D.
Winthrop Rockefeller, L.H.D., LL.D.

OFFICERS OF ADMINISTRATION

George E. Armstrong, A.B., M.D., LL.D., *Vice President for Medical Affairs and Director*
Donal Sheehan, B.S., M.S., M.B., CH.B., M.D., SC.D. [MANCHESTER], *Dean and Deputy Director*
Peter Arakelian, B.S., A.M. (PSYCHOLOGY), *Business Manager*



OFFICERS OF ADMINISTRATION
OF THE COLLEGE

Donal Sheehan, B.S., M.S., M.B., CH.B., M.D., SC.D. [MANCHESTER]
Dean and Deputy Director
William Neill Hubbard, Jr., A.B., M.D.
Associate Dean

Professors Emeriti

Meredith F. Campell, B.S., M.S., M.D., *Urology*
Walter T. Dannreuther, M.D., *Obstetrics and Gynecology*
Alexander O. Gettler, B.S., A.M., PH.D., LL.D., *Forensic Medicine (Toxicology)*
Charles Gottlieb, M.D., *Radiology*
Isidor Greenwald, A.B., PH.D., *Biochemistry*
Arthur Krida, M.D., *Orthopedic Surgery*
Anthony J. Lanza, M.D., *Industrial Medicine*
Luther B. MacKenzie, A.B. [DALHOUSIE], M.D., LL.D., *Clinical Medicine*
Henry E. Meleney, A.B., M.D., *Preventive Medicine*
Alfred T. Osgood, A.B., M.D., *Urology*
Charles Hendee Smith, B.S., M.D., *Pediatrics*
William E. Studdiford, B.S., M.D., *Obstetrics and Gynecology*
William C. Von Glahn, B.S., M.D., *Pathology*

HISTORICAL SKETCH

College of Medicine

The creation of a medical college had always been part of the plans of the University founders, as shown by the fact that as early as 1837, only six years after the granting of the first charter, the minutes of the meetings of the University Council contained the names of men suggested as professors for the chief branches of medical instruction. It was not until 1841, however, that the University Medical College was organized and instruction was begun under the following faculty: Valentine Mott, professor of surgery; Granville Sharp Pattison, professor of anatomy; John W. Draper, professor of chemistry; John Revere, professor of theory and practice of medicine; Martin Paine, professor of institutes of medicine and materia medica; Gunning S. Bedford, professor of obstetrics and diseases of women and children.

Bellevue Hospital Medical College was founded in 1861 when a college building was erected upon the hospital grounds, although clinical instruction had been given in Bellevue Hospital since 1847 by individual members of the medical board. The first faculty consisted of: Stephen Smith, principles and practice of surgery; Frank Hastings Hamilton, surgery of bones and accidents; James R. Wood, operative surgery and surgical pathology; Alexander B. Mott, surgical anatomy; Lewis A. Sayre, orthopedic surgery; Isaac E. Taylor, Fordyce Barker, George T. Elliot, Jr., obstetrics; Benjamin W. McCreedy, materia medica and therapeutics; John William S. Gouley, anatomy; Austin Flint, principles and practice of medicine; Austin Flint, Jr., physiology; R. Ogden Doremus, chemistry and toxicology.

With the passing of years and the growth of the University ideal in medical education, it became clear that both schools would be benefited by a consolidation under University control. As a result, the medical college was established in its present form in 1898 when it became an integral part of New York University under the name of University and Bellevue Hospital Medical College. In February 1935 this name was changed to New York University College of Medicine.

New York University-Bellevue Medical Center

New York University established the Medical Center in 1947 in order to expand its program of medical education, research, and patient care. All the hospitals in which the clinical part of the program of the two schools is carried out are operated by outside agencies, either municipal or voluntary, except the University Hospital, which is owned and operated by the University. By far the largest part of the clinical program is

in Bellevue Hospital, in which the University has operated its teaching and research programs for over a century.

Through the facilities of the Medical Center, the University is able to offer exceptional opportunities for research and for medical study at the undergraduate, graduate, and postgraduate levels. Information regarding graduate and postgraduate courses is given in the catalogue of the New York University Post-Graduate Medical School and may be obtained by writing to the Dean of that school at 550 First Avenue, New York 16, N.Y.

Buildings

In order to house the center more effectively a building program requiring more than thirty million dollars has been undertaken. The Institute of Physical Medicine and Rehabilitation was the first new unit completed in 1951. In September of 1954 the Medical Science Building and the adjacent Berg Institute were occupied. This building houses the principal research laboratories and teaching areas as well as the center library, the administrative offices, and the student lounge. In February 1957 the Hall of Residence was completed as well as new student and faculty dining facilities. In the summer of 1957 Alumni Hall was completed, containing a large auditorium and the large classrooms. Plans for the new University Hospital are well advanced and construction should begin in the near future.

Libraries

Gilbert J. Clausman, A.B., B.S., M.S. *Librarian*

Dorothy A. Lord, B.S., A.M., *Assistant Librarian*

Minnie Wohlauer, B.S., *Periodicals Librarian*

John Balkema, A.B., *Assistant Reference Librarian in charge of the Neuropsychiatric Library*

The libraries of the Medical Center consist of the Egbert Le Fevre Memorial Library, located on the basement, ground, and first floors of the Medical Science Building, the Neuropsychiatric Library at 400 East 30th Street, the Institute of Physical Medicine and Rehabilitation Library at 400 East 34th Street, and the University Hospital Library at 356 Second Avenue.

These libraries contain standard textbooks and monographs in all fields of the medical sciences and regularly receive about 685 different periodicals, including foreign ones. Together the libraries have about 81,000 volumes.

The Egbert Le Fevre Memorial Library, in addition to stack and staff rooms, consists of the main reading room and periodicals room with a

total seating capacity of 300. Adjacent to the stacks are small study rooms for group discussion and individual study carrels.

Through the library, material from other libraries of the University, containing nearly 1,100,000 volumes, may be borrowed. Also, books may be borrowed on interlibrary loan from the libraries of the New York Academy of Medicine, Columbia University, the Medical Society of the County of Kings, the Library of Congress, and others.

Instruction in the use of the main bibliographic aids is given incoming students by the librarian. Students needing help in difficult problems may consult the reference librarian in the circulation room.

Helen R. Bayne, A.B., *Curator of the Library on Man's Place in Nature; Archivist and Research Librarian to the Medical Center*

A new Library on Man's Place in Nature, located in the Medical Science Building, was opened in September 1955. This collection is concerned primarily with those aspects of the natural sciences, semantics, and philosophy that bear importantly on man, his evolution, and his significance in the cosmos. Dr. Homer W. Smith, director of this project, conducts seminars which are addressed by guest speakers and to which everyone is invited, with the audience taking an active part in the later question and answer period. Lists of specially selected books with full reviews are issued periodically. These lists are distributed to students, faculty, and other interested persons.

HOSPITALS AFFILIATED WITH THE MEDICAL CENTER

University Hospital, which was formerly the New York Post-Graduate Hospital, has been an integral part of the New York University-Bellevue Medical Center since December 1, 1948. It is a voluntary hospital of 406 beds devoted to the care of private, semiprivate, and ward patients. At present it is a major teaching area of the Post-Graduate Medical School and the College of Medicine.

Bellevue Hospital, the largest of twenty-six municipal hospitals owned and operated by the Department of Hospitals of New York City, was founded in 1736. It offers accommodations for over 3,000 patients, primarily those with acute diseases. Its yearly admissions average 65,000. The hospital is organized in four divisions, the third and fourth being known as New York University Divisions. The Third Division has been associated with the College of Medicine for over 100 years. In the winter of 1948 the surgical and medical services of the Fourth Division became

associated with the Post-Graduate Medical School. Bellevue provides the greatest portion of the clinical facilities for teaching by the College of Medicine and the Post-Graduate Medical School.

Goldwater Memorial Hospital for Chronic Diseases, a municipal hospital on Welfare Island, was opened in 1939. The New York University Division has 750 beds divided among medical (500), surgical (100), neurological (100), and research (50) services. It provides an unusual opportunity for the study of chronic disease and is utilized in both the regular and elective work of the undergraduate students.

Gouverneur Hospital, a municipal hospital of 200 beds, is located at Gouverneur Slip.

Lenox Hill Hospital, a voluntary hospital of 600 beds, was incorporated in 1861. For many years elective courses have been available to undergraduate students.

St. Vincent's Hospital, a voluntary hospital of 626 beds, established in 1849, is in the midst of an extensive building program that will increase its capacity to 700 beds. For some years, elective courses have been offered to students from the College of Medicine, and since 1951 a portion of their regular clinical work in surgery has been done at St. Vincent's Hospital. In 1945 the affiliation was expanded to include postgraduate training.

Beekman-Downtown Hospital, a voluntary hospital of 180 beds, located in the heart of the financial district of New York City, is known for the large number of patients admitted with acute surgical conditions, particularly of traumatic origin. In 1947 teaching in traumatic surgery was instituted at the postgraduate level.

New York Eye and Ear Infirmary, a voluntary hospital founded in 1820, was the first institution limited to diagnosis and treatment of diseases of the eye, ear, nose, and throat to be established in this country. It has 171 beds in addition to a very large outpatient service. Since 1946 this institution has participated in the instruction of postgraduate students in ophthalmology and otorhinolaryngology.

Irvington House for Cardiac Children, a voluntary convalescent hospital of 103 beds, has been affiliated with the College of Medicine for several years. The Medical Board is made up of members of the faculties of the Medical Center. It offers elective work to students of the College of Medicine as well as postgraduate teaching in pediatrics.

Beth Israel Hospital, a voluntary institution, has 382 beds and 80 bassinets. For many years elective courses have been available to undergraduate students.

New York State Rehabilitation Hospital, at Haverstraw, N.Y., is a specialty hospital of 300 beds that is limited to the care of children and adults with orthopedic conditions as well as poliomyelitis.

Regional Hospital Plan

The purpose of the REGIONAL HOSPITAL PLAN is to aid community hospitals in the suburbs and in rural communities to improve and extend their medical educational programs through affiliation with the Medical Center. The affiliation thereby assists the physicians of the hospital staff, as well as those in the community, in a process of continuing medical education with whatever aid, advice, and supervision may be useful from the Medical Center.

Participating hospitals as of June 1, 1957, are:

Greenwich Hospital, Greenwich, Connecticut
 Hunterdon Medical Center, Flemington, New Jersey
 Meadowbrook Hospital, Hempstead, New York
 Mountainside Hospital, Montclair, New Jersey
 Overlook Hospital, Summit, New Jersey
 St. Joseph Hospital, Paterson, New Jersey
 St. Vincent's Hospital, Bridgeport, Connecticut
 United Hospital, Port Chester, New York

ADMISSION, REGISTRATION, AND MATRICULATION

Requirements for Admission

Successful completion of at least three years of study in an institution included in *Approved Colleges of Arts and Sciences* published by the American Medical Association, 535 North Dearborn Street, Chicago 10, Illinois, is required. The following minimal course credits must be completed:

INORGANIC CHEMISTRY—A minimum of six semester hours, of which at least four should be laboratory work.

ORGANIC CHEMISTRY—A minimum of six semester hours, of which at least four should be laboratory work.

PHYSICS—A minimum of six semester hours, of which at least two should be laboratory work.

BIOLOGY—A minimum of six semester hours (including not less than four hours of zoology, of which at least two should be laboratory work).

ENGLISH—A minimum of six semester hours. Each student must have facility in the use of English in speech and composition. A one-year course in which composition is included is acceptable, but two years of college English are recommended. If, in the judgment of the authorities of the applicant's college, he has obtained enough training in secondary school to be exempted from the usual beginning course in English, an additional year in a more advanced course in English will fulfill the requirement.

A semester hour is one hour of lecture or recitation, or two hours of laboratory work, per week for one half of an academic year or the equivalent of sixteen calendar weeks.

The courses given in professional schools of pharmacy, veterinary medicine, and agriculture are not credited toward fulfilling the admission requirements of this school.

Each applicant must take the Medical College Admission Test of the Association of American Medical Colleges (formerly called the Professional Aptitude Test). This test will be administered by the Educational Testing Service. Applications and general information may be obtained from the Educational Testing Service, P.O. Box 592, Princeton, N.J.

Courses taken after the minimum premedical requirements have been fulfilled should be chosen with a view of enlarging the scope of the applicant's cultural background in terms of a broad liberal education. The study of natural science is itself part of a liberal education only when the student's genuine interest and capacity dictate the choice of studies in the natural sciences. The role of the latter in the education of the student becomes perverted if he elects courses in the sciences in an attempt to duplicate the work of the first two years in medical school.

Method of Making Application

All applications and inquiries regarding admission should be addressed to the Secretary, Committee on Admission, New York University College of Medicine, 550 First Avenue, New York 16, N.Y.

Students who have failed in another medical school are not eligible to apply for admission. Applications from individuals who have not been admitted to this school on the basis of two previous applications cannot be considered by the committee.

Application forms will be available for distribution about the first of September. The Committee on Admission meets regularly from October until the selection of the class is completed. As soon as a definite decision is reached by the committee the applicant is notified. Applications must be filed by December 15, after which no further applications can be accepted, except upon petition to the Committee on Admission. The responsibility for ensuring that his application is complete rests with the applicant, although the College of Medicine will endeavor to inform candidates if the desired data are not received within a reasonable time.

An application fee of \$10.00 is required of each applicant. This fee is not returnable.

Detailed instructions for making applications are sent to each candidate with the application form. This information is presented, therefore, in only a summary form.

Manner in Which Applicants Are Chosen

It is hoped that the following explanation of the working of the Committee on Admission may help to dispel some of the uncertainties that exist in the minds of some applicants.

The Committee on Admission is composed of members of the faculty of the College of Medicine.

Each application is evaluated by representatives of the committee, and the decision whether or not to interview the candidate is made. The basis for this decision is a composite estimate of the applicant's ability as measured by the academic record, the recommendations of the premedical faculty, the performance on the Medical College Admission Test, extracurricular activities, and the over-all standing of the applicant in relation to the other students who apply to the College of Medicine each year. Only about one third of all applicants can be interviewed.

The interviewer's impressions are added to all the required application data and presented to the Committee on Admission. A decision may be made to accept, reject, or defer disposition of an application. Matriculation after acceptance depends on completion of all academic requirements and the approval of the Office of Student Health. Women have been eligible for admission to the College of Medicine since 1919.

Admission to Advanced Standing

All requirements for admission to the first-year class (including the Medical College Admissions Test) must have been fulfilled by applicants for advanced standing.

A student in good standing at a medical school approved by the Association of American Medical Colleges may apply for admission to advanced standing in this school. The endorsement of the dean of the medical school from which application is made is required, as well as an official transcript from that school. The Committee on Admission may also require the applicant to take examinations in the subjects of the first two years if it so desires.

Applications for advanced standing may be made as late as May. No credit toward advanced standing is given for work completed in schools of dentistry, nursing schools, medical schools not approved by the Association of American Medical Colleges, schools of veterinary medicine, or schools of pharmacy.

Foreign Students

Students from abroad who wish to apply for admission to the first-year class should write to the Foreign Student Center (15 Washington Mews,

New York 3, N.Y.) about admission and courses. Applicants must have superior school records and an adequate command of the English language. Proficiency in English will be tested upon arrival. Applicants must present (1) a chronological outline of previous education and (2) authorized school records and notarized translations of them. Records should be sent to the Foreign Student Center. No foreign student can be considered until his credentials have been evaluated and approved by the Bureau of Professional Education, State Education Department, University of the State of New York, 23 South Pearl Street, Albany 1, N.Y. This should be done before application is made to the medical school. The applicant will be notified as promptly as possible whether he is or is not accepted or he will receive further instructions from the Foreign Student Center. Each applicant who is accepted will receive a certificate of admission which can be presented to the local American consul. Holders of nonimmigrant (F) student visas must return to their own countries upon completion of their education. Information concerning fees and expenses may be found on pages 22-23. *Students from abroad who are already in or near New York City should telephone the Foreign Student Center (Spring 7-2000, Extension 343) to arrange for personal appointments.*

Matriculation

Students whose applications have been accepted are required to make a deposit of \$100.00 within a period of fifteen days after notification of favorable action on their applications. This deposit is not returnable after January 15, but is credited toward the first tuition payment.

Registration

At the beginning of each session, all students must register in the offices of administration, 550 First Avenue, New York, N.Y.

All students must make a payment on their general tuition fee as described under the schedule of fees.

Registration of Veterans

PUBLIC LAW 550

A veteran who wishes to attend college under the educational provisions of Public Law 550 (Korean GI Bill of Rights) should apply to the Veterans Administration on VA Form 7-1990 for benefits. The veteran is strongly urged to seek the advice of the Veterans Co-ordinator of his school, or of the Veterans Counseling Service in the Office of the Registrar, for assistance in completing this form. After his application has

been processed, the veteran will receive a Certificate for Education and Training, VA Form 7-1993, which should be presented immediately to the Administration Office of the College of Medicine, Room 156.

Under this law, a veteran pays his fees at the time of registration but will receive a monthly allowance from the Veterans Administration based on attendance and progress reports made by the University. It is the veteran's responsibility to see the Veterans Co-ordinator at the end of every month about these reports. The Bursar's Department may be consulted concerning extensions of payment of tuition.

It is imperative that a veteran have all his registration material and any changes of program stamped "K." *Without this identification his monthly allowance may be delayed.*

Under this law the Veterans Administration may approve only one change of course; such change is normally authorized *before* the delimiting date. Therefore, a veteran should plan his program of education with great care. If a veteran wishes help in planning his education or in choosing his professional objective, he should ask the Veterans Administration for educational and vocational counseling on his application for benefits (VA Form 7-1990).

PUBLIC LAWS 16 AND 894

A veteran desiring to register under either of these laws is required to submit to the Veterans Administration a letter of acceptance from the college he wishes to attend. If he meets the requirements of the Veterans Administration, he will be given an authorization for education, VA Form 7-1905, which he must present to the Veterans Counseling Service in Room 304, Main Building, before registering.

ALL VETERANS

All allowance checks are sent to the veterans by the Veterans Administration, not by the University. Any preliminary inquiries regarding nonreceipt of these checks, therefore, should be made of the Veterans Administration.

All veterans must reach the objective (A.B., B.S., A.M., M.S., certificate, or doctorate) authorized by the Veterans Administration with the minimum number of points required. The Veterans Administration will not authorize tuition payments for credits that are in excess of scholastic requirements.

NEW YORK STATE WAR SERVICE SCHOLARSHIPS

At the time of registration, recipients of these scholarships should present evidence from the State Education Department authorizing them to use the scholarships at New York University.

VETERANS COUNSELING SERVICE

Veterans are always welcome to use the University's Counseling Service in the Office of the Registrar (Room 304, Main Building, Washington Square) for information or assistance in filing for educational benefits.

Since interpretation of regulations governing veterans' benefits is subject to change, veterans should keep in touch with the Veterans Counseling Service of the University or with the Veterans Administration.

Selective Service

The University maintains close relationships with the Selective Service System and attempts to do all within its power to advise students of the latest developments and interpretations and the special provisions of the law relating to college students.

Inasmuch as the law as well as the regulations may be modified, it is suggested that the student keep in touch with the University Selective Service Committee or his local board.

Advancement in Course

The advancement of a student from one year of study to the next and the recommendation for graduation is made by action of the faculty through its Executive Committee. The Executive Committee can, at its discretion, approve advancement, require the student to repeat all or part of a year's work, refuse further registration, or take whatever other action it may deem appropriate in an individual instance. The student may petition the Executive Committee in person or by letter to reconsider its decision.

Candidates refused further registration or required to repeat all of a year's work receive no credit for the work of the year just completed.

The faculty of the College of Medicine through its Executive Committee reserves the right to refuse registration to any student whom it believes to be unsuited for any reason to the conditions of study in this school.

Examinations

The Executive Committee of the faculty may require a student to submit to such written, oral, and practical examinations as it may think proper in each individual case.

The regulations governing examinations are subject to change at any

time on the decision of the faculty. At the present time these regulations are as follows:

Examinations in course are held at the discretion of the department concerned and are considered part of its teaching activity. As such they are given in the hours assigned by the Curriculum Committee to the course. The forms of the examinations are determined by the departments.

At the end of each of the four years a week is set aside during which the student is examined in all the work of the preceding year. In the first and second year a pre-examination week is set aside during which no classes are scheduled.

Requirements for Graduation

Students may become candidates for graduation under the following conditions:

1. They must have completed successfully four years of medical work, of which the last two years must have been taken in this institution.
2. They must, as required by law, have reached the age of twenty-one years.
3. They must have discharged all their financial obligations to the University.
4. They must be recommended for graduation by the faculty of the College of Medicine through its Executive Committee.

Students who meet these requirements will be recommended to the Board of Trustees of New York University for the degree of Doctor of Medicine.

Medical Licensure

National Board Examinations: The certificate of the National Board is accepted in lieu of the State Board Examination by the licensing authorities of a great majority of states.

Applications for these examinations should be made at least six weeks in advance of the date of the examination. Additional detailed information may be obtained by writing to Dr. John Hubbard, Executive Secretary, National Board of Medical Examiners, 133 South 36th Street, Philadelphia 4, Pa.

New York State Board Examinations: Applications for admission to the examinations must be filed at Albany at least fifteen days prior to the date of the examinations. Complete information concerning the New York State Board Examinations is contained in Handbook No. 9, which can be obtained by writing to the Chief, Professional Examinations Bureau, New York State Department of Education, Albany, N.Y.

FEES¹

The Board of Trustees of New York University reserves the right to alter this schedule of fees without notice.

The medical course consists of four academic sessions. The tuition is \$1,117.00 per academic year. In addition to general instruction, this fee covers all laboratory fees, the medical fee, and the library fee. It also includes the \$10.00 student health fee, and the \$7.00 student activities fee.

No candidate may be recommended for a degree until all required fees have been paid. The University cannot be responsible for the inclusion in the current official graduation list of any candidate who pays fees after the stated date. Following the payment of all required fees, the candidate will be recommended for the degree as of the date of the next regular meeting of the University Board of Trustees at which the awarding of degrees is part of the order of business.

Should a student withdraw from his course for any reason other than serious illness, no fee will be refunded.

Payment of Fees

Students may select either Plan I or II for the payment of fees.

I. Full-Payment Plan

Upon registration:
General instruction, including laboratory, library, and medical fees \$1,117.00

II. Two-Payment Plan

Upon registration:
General instruction, one-half academic session, including laboratory, library, and medical fees 558.50
At mid-term:
General instruction, one-half academic session 558.50

Checks should be made payable to New York University College of Medicine for the exact amount of tuition.

Alumni of the College of Medicine or of either of the two medical colleges through the union of which it was formed are admitted without fee to the lectures and clinics of the third and fourth years.

¹ A deposit of \$100.00 is required of all accepted applicants. This deposit is applied to the first tuition payment and is not returnable after January 15.

Students are required to provide themselves with a microscope, dissecting sets, laboratory materials, and textbooks as recommended by the heads of various departments; these become their personal property. All materials and books are sold at the college Campus Store.

The current tuition fees cover approximately one half of the educational cost for a student in the College of Medicine.

*Estimate of Minimal Expenses for Students Taking a Full Course for One Session**Fees*

General instruction, including laboratory, library, and medical fees	\$1,117.00
Board	400.00
Room	325.00
Supplies, books, clothing, etc. (not including microscope)	225.00
<i>Total</i>	<i>\$2,067.00</i>

Dormitory Fee

The Hall of Residence provides single and double rooms as well as a few two-room suites. Accommodations are available for both women and men. Married couples may also live in the dormitory; but there are no housekeeping facilities. Linen, blankets, and maid service are provided. A cafeteria in the center provides meals at reasonable prices.

Single-room accommodations rent at \$45.00 monthly or \$400.00 for the school year (September through May). Double-room rates are \$37.50 monthly for each occupant or \$325.00 for the school year; while suites rent for \$75.00 monthly for each occupant or \$650.00 for the school year. Applications for dormitory rooms should be made at the time the student accepts a position in the class by writing to: Supervisor, Hall of Residence, New York University-Bellevue Medical Center, 550 First Avenue, New York 16, N.Y.

FELLOWSHIPS, SCHOLARSHIPS, LOAN FUNDS,
AND PRIZES*Fellowships*

John Wyckoff Memorial Fellowship Fund. This fund was established through gifts of faculty and alumni (through the Alumni Fund) and friends of the late Dean Wyckoff for a fellowship to be awarded annually in the Department of Medicine.

Harry Livingston Research Fellowship. The income to be used for a fellowship or fellowships for research in metabolism.

Abraham S. Birsh Fellowship. This fellowship is for the purpose of advancing research and knowledge in diseases of the cardiovascular-renal system.

Scholarships and Loan Funds

Although the scholarship and loan funds are listed individually, all applications for assistance are made to the Committee on Student Aid through the Office of the Associate Dean without reference to any specific fund. The committee makes available these specific funds at its own discretion. Applications for assistance should be received in the spring of the preceding academic year. Preference in giving student aid is shown to those who have completed at least one year of the medical-school curriculum. Awards are made with financial need as the primary consideration.

Edward A. Ames Scholarship Fund. This fund, a bequest of Dr. Edward A. Ames, provides aid for worthy students in the College of Medicine.

Joseph D. Bryant Medical Scholarship. By the will of the late Joseph D. Bryant, a former professor of surgery, a trust was created for the benefit of the College of Medicine, the income thereof to be devoted in perpetuity to the establishment and maintenance of one or more medical scholarships, preferably for some worthy medical student or students from Norwich, Chenango County, New York.

Lee C. Van Wagner Scholarship Fund. The income to be used for scholarships in the College of Medicine. This is open to residents of Chenango County and Otsego County in the state of New York. Each applicant must be sponsored by the censors or governing committee of the medical society of such county. He must be in good physical condition and must agree to reside and practice medicine for a period of at least five years immediately after the completion of his medical education in either or both of the counties mentioned above, other than in the cities of Norwich and Onondaga.

John E. Weeks Scholarship Fund. By a gift of the late Dr. John E. Weeks, this fund has been established for scholarships.

College of Medicine Loan Trust. Student loan fund derived from various sources.

College of Medicine Class of 1926 Loan Fund. This fund was established by the members of the College of Medicine class of 1926 as a memorial to classmates who are deceased.

David Marks Memorial Loan Fund. This fund has been established by Mrs. A. Braslau and Miss Sophie Braslau in memory of Dr. Marks in the hope that his unselfish, beautiful spirit will serve as an inspiration and incentive to the lofty and noble attainments that characterized his life.

Robert J. Carlisle Student Loan Fund. This fund has been provided by gifts received from the alumni of the College of Medicine to afford needy students the financial assistance to complete their medical course.

Dr. Mary Halton Memorial Fund. Established in 1950 as a loan fund

to aid women students in their education at the New York University College of Medicine.

Max Blumberg Philanthropic League, Inc., Educational Aid in Memory of Dorothy Schwartz Rosenberg. Established in 1951 to provide financial aid to a deserving student or students as selected by the Committee on Student Aid of the College of Medicine.

Students Association Loan Trust. This fund was established through gifts of the 1941-1943 Students Association of the College of Medicine.

Dr. Samuel H. Jesserun Scholarship. Established by the gift of Mrs. Samuel H. Jesserun in memory of her husband, to be awarded to a needy and deserving student in the College of Medicine, preferably to one participating in research problems in blood diseases or other disorders.

William Woods Beckman Student Aid Fund. This fund was established as a memorial to the late Dr. William Woods Beckman, Assistant Dean of the College of Medicine, from 1948 to 1951, by his friends and students, for the purpose of assisting students in need.

Class of 1927 Fund for Student Aid. To increase the fund for student aid by the members of the class of 1927.

Picker Fund. Gift of Mr. James Picker, to provide loans for students who would otherwise be unable to continue their education. These loans are interest free until the student has become self-supporting following graduation.

Emanuel Giddings Loan Trust. This loan trust was set up to assist the needy students at the College of Medicine.

The Parents Association Special Loan Fund. This fund is provided by the Parents Association to cover emergency needs of students on the recommendation of the Dean.

Elisha M. Friedman Memorial Fund. To be used by the College of Medicine for the purpose of setting up and maintaining a student loan fund.

Samuel Higby Camp Foundation. In memory of Mr. Samuel Higby Camp, these scholarships will be given to candidates selected by the Dean.

The Robert J. Carlisle Fund of the Society of Alumni of Bellevue Hospital. This fund is to be used at the discretion of the Dean for worthy undergraduate or postgraduate students of medicine.

Schapiro Scholarship Fund. A maximum of \$500 each for two students from funds awarded by the Schapiro Scholarship Fund Inc. Scholarships are awarded annually at the discretion of the Student Aid Committee to "assist worthy and needy students in completing their course of study."

J. C. Kellogg Foundation Scholarship Fund. In memory of Charles and Margaret E. Urner. For students of high scholastic standing who would otherwise be financially unable to acquire a medical education.

Samuel Rubin Foundation Inc. These scholarships which are renewable for four years are awarded to students who would otherwise be financially unable to undertake a medical education. They are awarded upon the recommendation of the Student Aid Committee.

de Rothschild Scholarship. Through the generosity of Bethsabée de Rothschild we have been able to establish a scholarship fund for the benefit of needy medical students.

Agnes Purdie Medical Student Aid Fund. This fund, established by her friends in memory of Agnes Purdie, is to make available small amounts of money on a short term loan basis. It is to be utilized primarily as an emergency fund for needs which have not been anticipated.

Prizes

Mott Prize Medals. By the will of Dr. Valentine Mott, a founder of the University Medical College, and for many years its president and professor of surgery, provision was made for the following medals:

A silver medal to the candidate who has attained an honor standing in anatomy during the first year.

A bronze medal to the clinical clerk making the best contribution to the clinical investigation in surgery.

The preparations shall belong to the University Mott Prize Museum in the Department of Anatomy and be labeled with the names of the students submitting them.

Reports of cases shall belong to and be filed in the library.

Further information regarding the preparations or reports will be furnished by the professor of anatomy or surgery.

Alpha Omega Alpha Prizes. The Alpha Omega Alpha honorary fraternity awards prizes annually to the three students who have attained the highest scholastic ratings for the four years of their medical course.

Glover C. Arnold Surgical Prize. A prize of \$50 is offered for the best examination in surgery in the third-year class. This prize was established by the family of Dr. Glover C. Arnold, a graduate of the class of 1873.

Maurice Freiman Memorial Prize. A bequest in memory of the late Dr. Maurice Freiman, an alumnus of the medical college, provides for a prize to be awarded annually to a student or students for exemplary and outstanding work.

Herman Wortis Neuropsychiatric Prize. This prize, the income of a fund of \$1,000 given in memory of Herman Wortis, M.D., formerly assistant professor of clinical psychiatry, is awarded annually at the Last Day Exercises to the member of the senior class who has done the best work in the Departments of Psychiatry, Neurology, and Medicine.

Borden Undergraduate Research Award in Medicine. An award of

\$500 is made each academic year to the student in his senior year who, during any part of his medical course, has shown outstanding ability in research. The award is presented at the time of graduation.

William Linder Prize. Under the bequest of Dr. William Linder, a prize of \$100 is awarded each year to the student of the graduating class who excels in clinical surgery.

Frederick C. Holden Award. A prize of \$25 is awarded each year to a student of the graduating class for excellence in obstetrics and gynecology.

Hippolyte M. Wertheim Prize. A \$25 credit in the College of Medicine Campus Store awarded to the second-year student who attains the highest scholastic record during his first two years. This prize was established by the Tau Epsilon Phi fraternity as a memorial to Dr. Wertheim.

Nu Sigma Nu Prize. An annual prize of \$50 awarded to the undergraduate student who contributes the best scientific article or report of personal research effort during the school year.

People's Hospital Research Foundation Prize. A prize awarded to a student, to be selected by the Dean of the College of Medicine on the basis of demonstrated aptitude, who will engage in research in hygiene, medicine, surgery, or public health, either independently or as a research assistant to a professor, in the College of Medicine.

Journal Club Prize of the Department of Medicine. A prize is awarded to those students presenting on Student Assembly Day outstanding research reports judged on the basis of presentation, originality, and evidence of independent ability.

New York University Alumnae Club Key Pin. An award is made to the outstanding woman student in the senior class, not only on the basis of scholarship, but also on general participation in school activities.

Abraham Otto Tumen Award. An award is granted to the second-year student selected by his classmates as the one possessing to the highest degree those qualities essential to a family physician.

Women's Medical Association of New York City Award. An award is granted to the senior woman student with the most distinguished record.

Fred S. Mandelbaum Fund. The income of this fund is to be paid annually to a student in the subject of pathology and allied sciences who merits it in the opinion and judgment of those in authority and by the rules and regulations of the College of Medicine.

Solomon and Dora Monness Shapiro Scholarship. The income is to be awarded in the form of an annual cash prize to the student who shall, in the opinion of the faculty, be most deserving.

Optical Membership Award. To be awarded to the medical student submitting to the Dean of the College of Medicine the best report on his own work in problems of vision.

GENERAL INFORMATION

Discipline

To safeguard its ideals of scholarship, character, and personal behavior, the University reserves, and each student as a condition of admission concedes to the University, the right to require the withdrawal of any student at any time for any reason deemed sufficient. A prorata return of tuition is made if further attendance of any student is prohibited before the end of a term for which such tuition has been paid.

Transcripts of Record

The first two official transcripts of a student's record are issued free of charge. Additional copies may be had at a cost of \$2.00 each. Applications for transcripts, certifications, and other statements relating to the record should be addressed to the Recording Office of the College of Medicine with correct remittance and should state the name and address of the official to whom the information is to be mailed. In accordance with the general practice of colleges and universities, complete official transcripts and certifications (those bearing the original signature and seal) are sent directly by the University, not transmitted by the applicant.

The University reserves the right to withhold all information regarding the record of any student who is in arrears in the payment of fees or other charges, including student loans.

Required Equipment

All students entering the College of Medicine are required to provide themselves with microscopes for use throughout their medical course. Such microscopes must meet the minimum requirements set by the Committee on Scientific Instruments as noted below:

- Triple nose piece (quadruple piece recommended)
- Divisible condenser of the Abbe type
- Oculars—two are required. Examples of suitable lenses are listed below:
 - Bausch and Lomb—10x and 5x
 - American Optical (Spencer)—10x and 6x or 5x
 - Leitz—10x and 5x

Objectives—four are required. Examples of suitable objectives are listed below:

- Bausch and Lomb—40mm., 16mm., 4mm., and 1.9mm.
- American Optical (Spencer)—40mm., 16mm., 4mm., 1.8mm.
- Leitz—32mm. (3.5x), 3—10x, 6L—45x, and 1/12—100x

Students considering the purchase of a binocular microscope are advised that the higher power oculars to be used with the oil immersion objective should give a total magnification of about 1000x.

A mechanical stage is required as standard equipment.

The Medical College Campus Store has a supply of microscopes which meet the requirements stated above. Students who wish to secure microscopes through relatives, friends, or outside dealers may do so, but they must submit these microscopes to the Committee on Scientific Instruments for approval and registration.

Student Health

John H. Ayvazian, A.B., M.D., *Director*
 Hugh J. Carroll, B.S., M.D., *Assistant Physician*
 David S. Baldwin, A.B., M.D., *Assistant Physician*

The College of Medicine undertakes active supervision of the health problems of the student body. The supervision begins with a complete physical examination of all students who have been accepted for the entering class. Every student is examined roentgenographically annually.

Student Health office hours are from 9.30 to 10.30 A.M. Monday, and from 1 to 2 P.M. Tuesday through Friday, at which time students requiring attention are seen. Provision is made for caring for emergencies occurring at other hours. A student who is confined to his home by illness may be cared for by the family physician and the health service notified of this.

Emergency and other cases requiring hospitalization are cared for by the staff of the health service or by other members of the College of Medicine staff. Such students may be hospitalized in the University Hospital of New York University—Bellevue Medical Center or at Bellevue Hospital. The cost of hospitalization will be shared by the health service and the student. The health service will pay all expenses for the first three days of any hospitalization and additional expenses will be shared by the student and the health service on an equal basis.

The cost of Out-Patient Department services will be met by the health service except for X-ray examinations other than that of the chest, which will also be shared on an equal basis. The cost of hospitalization is not covered for elective surgical procedures or for chronic illness.

All students are given tuberculin and Schick tests as part of the teaching in microbiology in the second year. This program is correlated with the theoretical and practical phases of immunology given as part of that course. Those susceptible students who desire it are immunized at this time. Other immunization procedures are administered on an individual basis as the need for such immunization arises.

Student Assembly Day

During each academic year one day is set aside for a student assembly. At this time students present the results of research that they have undertaken. A committee of the faculty judges these presentations in terms of originality of thought, excellence of work, and results obtained. Three prizes are offered: two by the Journal Club of the Department of Medicine, consisting of three-day trips to the annual Atlantic City meeting of the Society for Clinical Investigation, and one by the Nu Sigma Nu Medical Fraternity, consisting of a \$50 award.

At the conclusion of the students' presentations, the program of the day concludes with a guest lecturer. Dr. Harry Eagle, Chief of the Section on Experimental Therapeutics, National Institute of Allergy and Infectious Diseases, National Institutes of Health, was the lecturer for the 1956-1957 session.

Lectureships

Menas S. Gregory Lectureship. This lectureship was established in 1945 in accordance with the will of the late Dr. Menas S. Gregory and provides an annual lecture in psychiatry. The lecturer for 1956-1957 was Dr. Horace W. Magoun, Professor of Anatomy, University of California.

Christian A. Herter Lectureship. Dr. Christian A. Herter, a former professor of pathological chemistry, through the Board of Trustees of New York University, provides a fund for an annual course of lectures on this subject. The lecturer for the 1956-1957 session was Dr. Harry Eagle, Chief of the Section on Experimental Therapeutics, National Institute of Allergy and Infectious Diseases, National Institutes of Health.

John Wyckoff Lectureship. This lectureship, established in 1937 by the Phi Delta Epsilon fraternity as a memorial to the late Dean Wyckoff, provides a fund for an annual lecture on a clinical subject. Dr. Harold Wolff, Professor of Medicine (Neurology) at New York Hospital-Cornell Medical Center was the lecturer for the 1956-1957 session.

In addition to these endowed lectureships, the following lectureships have been established on an annually supported basis:

Alpha Omega Alpha Lectureship. This lectureship is sponsored by the Delta Chapter of Alpha Omega Alpha honorary fraternity. The lecturer for 1956-1957 was Dr. D. G. Davey, Director of Parasitology of Imperial Chemical Industries.

Phi Lambda Kappa Lectureship. This lectureship is sponsored by the Eta Chapter of New York of the Phi Lambda fraternity. Dr. Dana W. Atchley, Professor of Clinical Medicine, Columbia University, College of Physicians and Surgeons, was the lecturer for the 1956-1957 session.

Visiting Professorship

Leopold Stieglitz Visiting Professorship. This professorship was established in 1947 by the friends of Dr. Stieglitz and provides funds for an annual visiting professor to the College of Medicine. The lecturer for 1956-1957 was Dr. Jacques Monod, Chef de Service, Biochimie Cellulaire, Pasteur Institute, Paris.

Student Government

The Students' Association of the College of Medicine. All students in the College of Medicine are members of the association upon registration. The object of the association is to "foster fellowship, support, regulate and encourage student activities, to promote further interest in problems of medicine, and to facilitate a cordial student-faculty relationship." It is the official representative of students in the College of Medicine and its elected officers constitute the student council. Dues are determined by the student council upon the advice and approval of the Dean. All students pay dues with tuition on registration day. Each year all students receive a copy of the *Medical Violet* yearbook, which is supported in part by the association.

Societies

Alpha Omega Alpha Honorary Fraternity. A chapter of the Alpha Omega Alpha honorary fraternity was established at New York University in 1923. Selection of members is on the basis of scholarship; not more than one tenth of any class is eligible for selection.

There are other student medical organizations. The *William Welch Society* was founded in 1929 by undergraduates for the "advancement of the study of medical history and culture among medical students." Meetings are held each month at which papers dealing with medical history are presented by invited speakers or by the members. The *Friends of The Le Fevre Library* was established in 1937 with the purpose of furthering the interests of the library. The *Medical Students Club* is sponsored by the Y.M.C.A. and holds occasional meetings in the college building throughout the year. The *Medical Psychology Club* is a discussion group and holds meetings at regular intervals.

College of Medicine Alumni Association. The association serves as a common bond between the college and all graduates, not only of the present school but also of the old University Medical College and Bellevue Hospital Medical College. The officers for the year 1957-1958 are: president, Wallace B. Murphy '30; president-elect, Maxwell H. Poppel '27; vice president, Bernard J. Pisani '33; secretary, Alan A. Scheer '46;

treasurer, Edward Bates '31; historian, Claude E. Heaton '21. The Alumni Federation director representing the Medical Alumni Association for 1957-1958 is William C. MacTavish. The association publishes a magazine, the *New York University Medical Quarterly*, for which Alan A. Scheer '46 serves as editor.

Graduate Medical Education

For information about graduate and postgraduate courses, communicate with the Dean, Post-Graduate Medical School, 550 First Avenue, New York 16, N.Y.

Division of Nursing

In 1942 the Bellevue Schools of Nursing became identified with New York University as the Division of Nursing of the College of Medicine. This affiliation, which is a broader application of a long-standing tie between the College of Medicine and Bellevue Hospital, makes it possible to offer additional educational opportunities to qualified candidates desiring to become registered professional nurses.

Two programs are offered: (1) a three-year course of study leading to the diploma in nursing; (2) a five-year course of study leading to the degree of Bachelor of Science, in addition to the diploma in nursing.

Detailed information about the nursing program may be obtained by writing to the Director, Bellevue Schools of Nursing, 466 First Avenue, New York 16, N.Y.

General Plan of Instruction

The aim of the general plan of instruction is to provide a setting in which the student can learn fundamental principles applicable to the whole body of medicine. The curriculum is designed to establish habits of reasoned and critical judgment and to develop the ability to use these principles and judgments wisely in solving problems of health and disease. There is no attempt made to present in systematic detail the data related to every medical discipline.

The first and second years are divided into three trimesters of eleven weeks with a free summer interval of three months dividing them. The third year begins immediately upon the completion of the second year, and continues for twelve months. The fourth year is divided into eight periods, each approximately four weeks long.

The work of the first year is concerned chiefly with the normal patterns of human structure, metabolism, growth, and development. The Departments of Anatomy, Physiology, and Chemistry assume the major re-

sponsibility for this teaching. The Departments of Psychiatry and Neurology and Physical Medicine and Rehabilitation as well as the other clinical departments offer introductory and orientation lectures as well as correlation clinics in order to assist the student in integrating his basic studies.

During the second year, the student continues his study of normal structure and function but with increasing reference to disease. The last trimester is largely an orientation and transition to clinical medicine. The Departments of Pharmacology, Microbiology, and Pathology, as well as Anatomy and Preventive Medicine, assume major responsibility for basic medical science instruction during the second year. Correlation clinics continue throughout the year. The Department of Medicine, including the Division of Clinical Pathology, and the several medical and surgical specialty departments combine in teaching a course in the principles of the examination of the patient. This course is an introduction to clinical medicine and is given in the latter portion of the second year.

The third-year students spend all their time on the hospital wards, with the exception of a one-hour lecture daily and in some instances the elective period. The Departments of Medicine, Surgery, Pediatrics, and Psychiatry and Neurology have regularly assigned clerkship periods. The medical and surgical specialty departments regularly participate in the teaching during the major clerkships.

The fourth year is devoted largely to the study of ambulatory patients. The Departments of Obstetrics and Gynecology, Medicine and Surgery, with their related subspecialties, as well as Psychiatry and Preventive Medicine, participate in this instruction.

The Honors and Merit Scholarship Programs

Although rapid progress in certain areas of medical science in recent decades has led to spectacular advances in medical care, the fact remains that medicine stands at the very threshold of its development as one of the biological sciences. Unsolved problems of crucial importance, concerning man and his diseases, are still to be approached in all fields of medicine. Because of this there is an increasingly urgent need for talented individuals to take up careers of investigation and teaching in medicine. At the present time the need is not being met; on the contrary, the number of medical-school graduates in training for such careers is less than adequate for the nation's universities, and the continuing progress of medicine is seriously threatened by this shortage.

The faculty of the New York University College of Medicine believes that the training of highly qualified students for careers in teaching and research is one of the primary educational responsibilities of this medical

school. In order to meet this responsibility, a new Honors Program has been added to the existing curriculum, specifically designed to stimulate interest and aptitude in medical research throughout the four years of medical school. Simultaneously, a new program of Merit Scholarships has been instituted for the support of exceptionally gifted students who wish to prepare for careers in medical research and teaching. Funds for the Honors and Merit Scholarship Programs have been provided by an institutional grant from the Commonwealth Fund to New York University College of Medicine.

THE HONORS PROGRAM

The Honors Program of the New York University College of Medicine has been designed for those students who wish to prepare themselves for careers in medical research and teaching. It provides for such students a large degree of flexibility of the medical curriculum, a broad introduction to modern research in biology and medicine, and an opportunity for independent study and research training in areas of the students' own interests. The details of the program vary to suit individual student's needs and aims, and it should form a valuable background for either clinical investigation or research in the preclinical sciences.

During the first two years of medical school a seminar program is open to all interested medical students in good standing who are willing to undertake the extra work involved. A weekly course of lectures and seminars dealing with various aspects of medical research is offered. The subjects covered are broad in scope and often deal with investigation in areas not covered by the usual medical-school curriculum. During the first year each participating student chooses a faculty adviser, with whom he meets informally and periodically to discuss the student's reading, research interests, and plans for summer and elective work. Students in each class also meet bimonthly as a Journal Club to present and discuss papers from current scientific journals.

During these first two years students are given opportunities in their spare time and summer vacations to become actively associated with a laboratory problem under the stimulus and guidance of a faculty member. Financial support is available for students who wish to participate in research during their summer vacations.

By the end of the second year, some students will have chosen a field of research interest and will wish to enter the Honors Program itself. In other cases, this decision may be deferred until the end of the third year. Selection of candidates is made on the basis of intellectual ability, motivation, and general suitability, and relatively few students will become candidates for a degree with honors.

The central feature of the Honors Program is a year of intensive re-

search training, during which the student spends virtually full time in active laboratory investigation in an area of his own choice. During this "Medical Sciences Year" the student is supported by a predoctoral research fellowship sufficient to defray his tuition and living expenses. At the end of this year the student returns to the regular third- or fourth-year course and has additional elective time available thereafter for his research. Students who have taken the "Medical Sciences Year" and who submit a thesis showing evidence of having carried out original and independent work become eligible for the M.D. degree with honors in their chosen branch of medical science.

THE MERIT SCHOLARSHIPS

Merit scholarships are offered each year to highly qualified college students who wish to enter upon careers of investigation and teaching in the medical sciences. The annual stipend is \$1,500 and scholarships are renewable each year for the remainder of the medical school course. Nominations should be submitted by the dean or by a member of the college faculty in which case they should be addressed to the Dean, New York University College of Medicine. Recommendations for awards to students entering medical school in September 1958 are now welcome and should be received before December 15, 1957.

Scholarships for Candidates for the Ph.D. Degree in the Basic Medical Sciences

The great contributions to medical education and research made by biological scientists with Ph.D. degrees indicate the importance of increasing the support of students for such careers in the future. To this end, four one-year predoctoral scholarships of \$1,500 each are offered annually to graduate students in their first year's work toward a Ph.D. degree in the basic science departments of the College of Medicine. The selection of winners of these scholarships is made by a special faculty committee. Application may be made at the time of applying for acceptance as a predoctoral student.

Electives

A student may do work of his own choosing in his free time, subject to the approval of the Associate Dean. Students may, at the discretion of the faculty, elect to interrupt their regular course of study any time after the first year in order to pursue individual work in one of the departments of the medical school.

During both the third and fourth years, eight weeks are provided for

elective work. The purpose of these periods is to provide the student an opportunity to work in an area that is of particular interest to him. The nature of the work should therefore be determined by the natural interest of the student. Elective work is available in all the departments of the Medical Center and its affiliated hospitals; work may also be arranged in other institutions when an individual's interest would thereby be better served.

Prior to each elective period, the students concerned are met as a group and elective opportunities are discussed. A personal interview with the Associate Dean is arranged for each student in choosing his elective work. A student interested in special work is invited to see the Associate Dean at any time.

During the summer funds are available for the support of students engaged in research work with the sponsorship of a member of the faculty.

SUMMARY OF REQUIRED STUDIES

COURSES	HOURS			
	1st Year	2d Year	3d Year	4th Year
Anatomy	484	88*		
Biochemistry	231			
Physiology	242	*		
Medical Statistics	33			
Microbiology (including Epidemiology and Parasitic Disease)		220		
Pharmacology		143		
Pathology		319	*	*
Clinical Pathology		66*		
Medicine		88*	558 ¹	152
Surgery		11	505 ¹	158
Pediatrics			274	108
Psychiatry and Neurology	11	37*	150	90
Obstetrics and Gynecology			54	274
Physical Medicine and Rehabilitation	*	5*	*	18*
Preventive Medicine				97
Industrial Medicine			11	
Radiology	2*	5*	*	*
Urology	1*	5*	*	*
Ophthalmology	1*	9*	*	*
Otorhinolaryngology	2*	9*	*	12*
Dermatology	2*	12*	6*	*
Orthopedic Surgery	2*	8*	*	
Forensic Medicine				11
<i>Interdepartmental Exercises</i>				
Human Growth and Develop- ment	11			
Correlation Clinics	33			
Combined Clinics			12	12
Clinical Pathological Conference Examination of Patient		(210*)	56	(28)
Unassigned elective time	2	2	300	300
<i>Total number of hours</i>	1,055 ³	1,025 ³	1,926 ³	1,260 ³

* The asterisk indicates a department's participation in interdepartmental exercises as part of its teaching responsibility.

¹ This includes 67 hours of night and week-end work during the clinical clerkship.

² Elective work may be individually arranged in the first and second years.

³ Only the formally required hours are shown here, and they do not indicate the time required for necessary work done on the student's own initiative.

DESCRIPTION OF COURSES

ANATOMY

Donal Sheehan, B.S., M.S., M.B., CH.B., M.D., SC.D. [MANCHESTER], *Professor and Chairman of the Department*

Louis L. Bergmann, M.D. [VIENNA], *Professor*

Joseph Pick, M.D. [VIENNA], *Professor*

Joseph M. Odiorne, B.S., A.M., PH.D., *Associate Professor*

Benjamin G. P. Shafiroff, M.D., *Associate Professor of Clinical Surgery (assigned to Anatomy)*

Howard C. Baron, M.D., *Instructor*

Mary J. Lorenc, *Instructor*

Edward John Reith, B.S., M.S., PH.D., *Instructor*

Barbara Jo Serber, A.B. (ZOOLOGY), PH.D., *Instructor*

Paul W. Bernstein, A.B., A.M., PH.D., *Assistant*

Maleva T. De Palma, A.B., M.S., *Assistant*

Bernard O. Nemoitin, A.B., A.M., M.D., *Assistant*

Joseph Sachs, M.D., *Assistant*

Charles Shafiroff, B.S., M.D., *Assistant*

Sven Arthur Swenson, B.S., M.D., *Assistant*

Quan Y. Kau, A.B., M.D., *Clinical Assistant*

FIRST YEAR

Lectures and laboratory extend through the first semester. Special classes in cytology extend into the second semester. Emphasis is placed on general biological principles, the structure and functions of the cell, genetics, growth and development and the general arrangement of the organs and tissues in the body. Wherever possible structure and function are studied together.

SECOND YEAR

*First Trimester**Neuroanatomy and Neurophysiology*

Lectures—Two a week during the first trimester. Dr. Louis Hausman, clinical professor of neuropsychiatry.

Laboratory—Neuroanatomy: two periods weekly of three hours. Neurophysiology: three hours weekly.

ELECTIVES

Advanced work in gross and microscopical anatomy and experimental neuroanatomy is offered to a limited number of students in any of the four years. Elective work is available by arrangement with the Associate Dean and the departmental chairman.

BIOCHEMISTRY

Severo Ochoa, M.D. [MADRID], *Professor and Chairman of the Department*

Gerhard W. E. Plaut, B.S., M.S., PH.D., *Associate Professor*

Robert C. Warner, B.S., M.S., PH.D., *Associate Professor*

Sarah Ratner, A.B., A.M., PH.D., *Adjunct Associate Professor*

Maxwell Schubert, A.B., A.M., PH.D., *Adjunct Associate Professor (assigned to Medicine)*

Charles Gilvarg, B.C.H.E., PH.D., *Assistant Professor*

Mary E. Dumm, A.B., A.M., PH.D., *Assistant Professor of Medicine (Biochemistry)*

Robert W. Chambers, A.B., PH.D., *Instructor*

Joseph J. Lospalluto, B.S., PH.D., *Instructor (assigned to Medicine)*

FIRST YEAR

First and Second Trimesters

Lectures—Three hours a week. Biochemistry is discussed as a basic biological science, emphasizing its relations to other medical disciplines (physiology, pharmacology, microbiology) and its significance and applications in medicine. About ten lectures at the end of the second trimester are devoted to special topics of strong current interest for the benefit of students particularly interested in the subject.

Laboratory—Six hours, once a week. Attention is given to the basic qualitative and quantitative analytical techniques, the isolation of important chemical compounds from tissues, and the performance of experiments illustrating the chemical dynamics of the cell, with special regard to the role played by enzymes, vitamins, and hormones in metabolic process. A special course (six hours once a week) is conducted during the last four weeks of the course for a maximum of twelve interested, selected students. This course consists of advanced experiments illustrating the modern approach to problems in enzymology and various aspects of dynamic biochemistry.

Conferences—One hour a week for group discussion of elementary lecture and laboratory material.

ELECTIVES

Opportunity is offered to a limited number of highly qualified students to work in the laboratories during their elective periods. Arrangements should be made with the Associate Dean and the departmental chairman.

DERMATOLOGY AND SYPHILOLOGY

Given by the Department of Dermatology and Syphilology of the
Post-Graduate Medical School

- Marion B. Sulzberger, M.D. [ZURICH], *George Miller MacKee Professor and Chairman of the Department*
 Frank C. Combes, M.D., *Professor*
 Franz Herrmann, M.D. [FRANKFURT], *Professor of Experimental Dermatology and Syphilology*
 Morris Leider, A.B., M.D., *Associate Professor*
 Rudolf L. Baer, M.D. [FRANKFURT], *Professor of Clinical Dermatology and Syphilology*
 David Bloom, M.D. [BERN], *Professor of Clinical Dermatology and Syphilology*
 Orlando C. Canizares, DOC.UNIV. [MED. FAC., PARIS], *Professor of Clinical Dermatology and Syphilology*
 Maurice J. Costello, B.S., M.D., SC.D. (HON.), *Professor of Clinical Dermatology and Syphilology*
 William Director, M.D., *Professor of Clinical Dermatology and Syphilology*
 Frances Pascher, M.D., *Professor of Clinical Dermatology and Syphilology*
 Samuel B. Frank, A.B., M.D., *Associate Professor of Clinical Dermatology and Syphilology*
 Andrew G. Franks, B.S., LL.B., M.D., *Associate Professor of Clinical Dermatology and Syphilology*
 Irving N. Holtzman, M.D., *Associate Professor of Clinical Dermatology and Syphilology*
 Arthur B. Hyman, M.B., B.S. [LONDON], *Associate Professor of Clinical Dermatology and Syphilology*
 Samuel Irgang, M.D., *Associate Professor of Clinical Dermatology and Syphilology*
 Emory Ladany, M.D. [BUDAPEST], *Associate Professor of Clinical Dermatology and Syphilology*
 Juan Larralde, M.D. [PARIS], MED.SC.D. [CENTRAL, CARACAS], *Associate Professor of Clinical Dermatology and Syphilology*
 Julius H. Pollock, B.S., M.D., *Associate Professor of Clinical Dermatology and Syphilology*
 Ernst Rosenbaum, M.D. [BRESLAU], *Associate Professor of Clinical Dermatology and Syphilology*
 Gdali Rubin, DOC.UNIV. [MED. FAC., PARIS], *Associate Professor of Clinical Dermatology and Syphilology*
 Herman H. Sawicky, B.S.; M.D. [EDINBURGH], *Associate Professor of Clinical Dermatology and Syphilology*
 Ludwig Schwarzschild, M.D. [WÜRZBURG], *Associate Professor of Clinical Dermatology and Syphilology*
 Mabel G. Silverberg, A.B., M.D., *Associate Professor of Clinical Dermatology and Syphilology*
 Charles F. Sims, A.B., M.D., *Associate Professor of Clinical Dermatology and Syphilology*
 Stanley A. Rosenthal, B.S., M.S., PH.D., *Assistant Professor of Experimental Dermatology and Syphilology (Microbiology)*

- Gerald Flaum, A.B., M.D., MED.SC.D., *Assistant Professor of Clinical Medicine (College of Medicine) (assigned to Syphilology)*
 Else A. Barthel, B.S., M.D., *Associate Clinical Professor of Dermatology and Syphilology*
 Benjamin Bender, B.S., M.D., *Associate Clinical Professor of Dermatology and Syphilology*
 Earle W. Brauer, A.B., M.D., *Associate Clinical Professor of Dermatology and Syphilology*
 Richard Emmet, A.B., M.D., *Associate Clinical Professor of Dermatology and Syphilology*
 Alexander A. Fisher, A.B., M.D., *Associate Clinical Professor of Dermatology and Syphilology*
 Herman Goodman, B.S., M.D., *Associate Clinical Professor of Dermatology and Syphilology*
 Joseph Hahn, B.S., M.D., *Associate Clinical Professor of Dermatology and Syphilology*
 John A. Heinlein, A.B., M.D., *Associate Clinical Professor of Dermatology and Syphilology*
 Norman B. Kanof, A.B., M.D., MED.SC.D., *Associate Clinical Professor of Dermatology and Syphilology*
 Paul R. Kline, M.D., *Associate Clinical Professor of Dermatology and Syphilology*
 George H. Kostant, A.B., M.D., *Associate Clinical Professor of Dermatology and Syphilology*
 William Leifer, M.D., *Associate Clinical Professor of Dermatology and Syphilology (assigned to Industrial Medicine)*
 Ludwig W. Loewenstein, M.D. [COLOGNE], *Associate Clinical Professor of Dermatology and Syphilology*
 H. Victor Mendelsohn, M.D., *Associate Clinical Professor of Dermatology and Syphilology*
 Sonia D. Morrill, M.D. [PARIS], *Associate Clinical Professor of Dermatology and Syphilology*
 Abraham J. Orfuss, B.S., M.D., *Associate Clinical Professor of Dermatology and Syphilology*
 Frederick Reiss, M.D. [BUDAPEST], *Associate Clinical Professor of Dermatology and Syphilology*
 Walter F. Rosenberg, M.D. [HEIDELBERG], *Associate Clinical Professor of Dermatology and Syphilology*
 Morris J. Rothstein, B.S., M.D., *Associate Clinical Professor of Dermatology and Syphilology*
 Victor H. Witten, B.S., M.D., *Associate Clinical Professor of Dermatology and Syphilology*
 Max Wolf, M.D. [VIENNA], *Associate Clinical Professor of Dermatology and Syphilology*
 Max Braitman, B.S., M.D., *Assistant Clinical Professor of Dermatology and Syphilology*
 Frank E. Cross, M.D., MED.SC.M., *Assistant Clinical Professor of Dermatology and Syphilology*
 Martin Fischer, M.D. [BRESLAU], *Assistant Clinical Professor of Dermatology and Syphilology*

- Dorothy Fisher, A.B., M.D., *Assistant Clinical Professor of Dermatology and Syphilology*
 Abraham J. Gewirtz, B.S.; M.D. [LAVAL], *Assistant Clinical Professor of Dermatology and Syphilology*
 Harold Glick, B.S., M.D., *Assistant Clinical Professor of Dermatology and Syphilology*
 Thomas N. Graham, M.D., *Assistant Clinical Professor of Dermatology and Syphilology*
 Otto B. Hitschmann, M.D. [VIENNA], *Assistant Clinical Professor of Dermatology and Syphilology*
 Ludwig Isaak, M.D. [WÜRZBURG], *Assistant Clinical Professor of Dermatology and Syphilology*
 Ralph Keen, B.S., M.D., *Assistant Clinical Professor of Dermatology and Syphilology*
 Leonard V. Kornblee, A.B., M.D., *Assistant Clinical Professor of Dermatology and Syphilology*
 Ralph I. Kreisberg, B.S. (MED.), M.D., *Assistant Clinical Professor of Dermatology and Syphilology*
 Morton Kulick, B.S., M.D., *Assistant Clinical Professor of Dermatology and Syphilology*
 Simeon E. Landy, A.B., *Assistant Clinical Professor of Dermatology and Syphilology*
 René Leviticus, M.D. [UTRECHT], *Assistant Clinical Professor of Dermatology and Syphilology*
 Irving L. Milberg, A.B., M.D., *Assistant Clinical Professor of Dermatology and Syphilology*
 Charles S. Miller, A.B., M.D., *Assistant Clinical Professor of Dermatology and Syphilology*
 Nathan Pensky, A.B., M.D., *Assistant Clinical Professor of Dermatology and Syphilology*
 George Popkin, B.S., M.D., *Assistant Clinical Professor of Dermatology and Syphilology*
 Sidney J. Robbins, B.S.; M.D. [VIENNA], *Assistant Clinical Professor of Dermatology and Syphilology*
 Julius L. Rosenfeld, M.D., C.M. [DALHOUSIE], *Assistant Clinical Professor of Dermatology and Syphilology*
 Jessie Rubin, A.B.; M.D. [LAUSANNE], *Assistant Clinical Professor of Dermatology and Syphilology*
 Gerald A. Spencer, B.S.; DOC. UNIV. [MED. FAC., LYON], *Assistant Clinical Professor of Dermatology and Syphilology*
 Louis H. Tobin, M.D., *Assistant Clinical Professor of Dermatology and Syphilology*
 Jacob Wachtel, M.D., *Assistant Clinical Professor of Dermatology and Syphilology*
 Hans H. Biberstein, M.D. [BRESLAU], *Lecturer*
 Donald J. Birmingham, B.S., M.D., *Lecturer*
 Max Jessner, M.D. [KÖNIGSBERG], *Lecturer*
 Emil G. Klarman, CHEM. ENG., ING. DR. [BRÜNN], SC.D. (HON.), *Lecturer*
 Theodore Rosenthal, B.S., M.D., *Lecturer*
 Leonard J. Vinson, A.B., M.S., PH.D., *Lecturer*

- Alfred W. Kopf, A.B., M.D., M.S. (DERM. AND SYPH.), *Instructor in Dermatology and Syphilology*
 Vagharshag Boghosian, M.D. [BEIRUT], *Instructor in Clinical Dermatology and Syphilology*
 Alexander Borota, M.D. [BUDAPEST], *Instructor in Clinical Dermatology and Syphilology*
 Sidney G. Clyman, B.S., B.S. (PHARMACY), M.D., *Instructor in Clinical Dermatology and Syphilology*
 Alfred J. Ephraim, M.D. [BERLIN], *Instructor in Clinical Dermatology and Syphilology*
 Benjamin D. Erger, M.D., *Instructor in Clinical Dermatology and Syphilology*
 Norman J. Goldfarb, A.B., M.D., *Instructor in Clinical Dermatology and Syphilology*
 Morton Hecht, Jr., B.S., M.D., *Instructor in Clinical Dermatology and Syphilology*
 Beatrice Kalish, M.D., *Instructor in Clinical Dermatology and Syphilology*
 Louis Kolbrenner, M.D., *Instructor in Clinical Dermatology and Syphilology*
 Irving E. Marks, M.D., C.M. [DALHOUSIE], *Instructor in Clinical Dermatology and Syphilology*
 Kate F. Miller, A.B., M.D., *Instructor in Clinical Dermatology and Syphilology*
 Helen Neave, A.B., M.D., *Instructor in Clinical Dermatology and Syphilology*
 Norman Orentreich, B.S., M.D., *Instructor in Clinical Dermatology and Syphilology*
 Leo Orris, A.B., M.D., M.S. (PUB. HEALTH), *Instructor in Clinical Dermatology and Syphilology (assigned to Industrial Medicine)*
 Hilda G. Straker, A.B., M.D., *Instructor in Clinical Dermatology and Syphilology*
 Jules E. Vandow, M.D., *Instructor in Clinical Dermatology and Syphilology*
 Abraham I. Weidman, M.D. [BOLOGNA], *Instructor in Clinical Dermatology and Syphilology*
 Arthur Back, M.D. [BRESLAU], *Clinical Instructor*
 Saul J. Blau, B.S., M.S. (DERM. AND SYPH.), *Clinical Instructor*
 Alfred B. Brotman, M.D., *Clinical Instructor*
 Vernal G. Cave, B.S., M.D., *Clinical Instructor*
 Sigmund J. Clayman, B.S.; M.D. [ZURICH], *Clinical Instructor*
 Thomas L. Day, B.S., M.D., *Clinical Instructor*
 Elfe W. Ehrenreich, M.D. [BERLIN], *Clinical Instructor*
 William D. Eller, M.D., *Clinical Instructor*
 Seymour Fried, B.S., M.D., *Clinical Instructor*
 Arthur H. Gladstein, A.B., M.D., *Clinical Instructor*
 Natalie D. Goldberg, M.D., *Clinical Instructor*
 Ralph Langer, B.S., M.D. [MONTREAL], *Clinical Instructor*
 Adrian Neumann, M.D. [GERMAN, PRAGUE], *Clinical Instructor*
 Alfred Pelzig, A.B., M.D., *Clinical Instructor*
 Joseph D. Rubin, A.B., M.D., *Clinical Instructor*
 Edwin R. Ruskin, M.D., *Clinical Instructor*
 Eugene L. Bodian, B.S. (CER. ENG.), M.D., *Assistant in Clinical Dermatology and Syphilology*
 Max A. Boxer, A.B., M.D. [PARIS], *Assistant in Clinical Dermatology and Syphilology*
 Charles DeFeo, A.B., M.D., *Assistant in Clinical Dermatology and Syphilology*

Lionel A. Dick, M.D. [MED. FAC., TORONTO], *Assistant in Clinical Dermatology and Syphilology*

Sidonia T. Furst-Chiavacci, U.M.D.R. [VIENNA], *Assistant in Clinical Dermatology and Syphilology*

Neville A. Griffith, B.S.; M.D., C.M. [MCGILL], *Assistant in Clinical Dermatology and Syphilology*

Irwin L. Maskin, A.B., M.D., *Assistant in Clinical Dermatology and Syphilology*

Bernard L. Rosenberg, *Assistant in Clinical Dermatology and Syphilology*

Erwin H. Zimmerman, B.S., M.D., *Assistant in Clinical Dermatology and Syphilology*

FIRST YEAR

Two hours are devoted in the first year to special anatomy and physiology of the skin. Associate Professor Leider and Associate Professors of Clinical Dermatology and Syphilology Hyman and G. Rubin.

SECOND YEAR

Twelve hours are devoted in the second year to methods of examination of the skin. There are three hours of didactic lectures and nine hours of clinical demonstrations with patients. Professor Sulzberger; Professors of Clinical Dermatology and Syphilology Canizares and Pascher; Associate Professor Leider; Associate Professors of Clinical Dermatology and Syphilology Holtzman and Hyman; Associate Clinical Professor Reiss; and staff.

THIRD YEAR

The work of the third year consists of seven didactic lectures in systematic dermatology and three hours of dermatologic consultations during clinical clerkship. Professors Sulzberger and Combes; Professors of Clinical Dermatology and Syphilology Baer, Canizares, and Costello; Associate Professor Leider; Associate Clinical Professors Bender, Brauer, and Kanof; and Assistant Clinical Professor Kornblee.

THIRD AND FOURTH YEAR ELECTIVES

Elective work on the dermatologic wards and outpatient departments or in the clinical and research laboratories of New York Skin and Cancer Unit and Bellevue Hospital for periods of one or more months may be taken by arrangement with the Associate Dean and the departmental chairman.

FORENSIC MEDICINE

Given by the Department of Forensic Medicine of
the Post-Graduate Medical School

Milton Helpern, B.S., M.D., *Professor and Chairman of the Department*

Rudolf M. Paltauf, M.D. [VIENNA], *Assistant Professor*

Charles J. Umberger, B.S., PH.D., *Assistant Professor (Toxicology)*

Sidney B. Weinberg, M.D., *Assistant Professor*

Alexander S. Wiener, A.B., M.D., *Assistant Professor*

Rowland H. Long, LL.B., LL.M., *Lecturer*

Meyer Texon, A.B., M.D., *Lecturer*

Lectures—A series of twelve lectures is given during the fourth year covering the following topics: the obligations and rights of physicians; relations of the physician to government agencies; functions of the office of medical examiner and of coroner; investigation and determination of the cause of sudden, suspicious, and violent deaths; the medicolegal necropsy; identification, signs of death, changes in the body after death; sudden natural death; relationship of disease and trauma; suicidal, accidental, and homicidal violent deaths; blunt-force injuries, stab and bullet wounds, traumatic asphyxia, rape, abortion, infanticide; toxicology, especially the indications of poisoning and the selection of organs for chemical analysis; examination of blood stains, seminal stains, and hair, forensic application of blood grouping; occupational injuries and disease.

Practical Course—An opportunity is offered to small groups of elective students to learn the surrounding circumstances and observe at firsthand the autopsy and other laboratory procedures in numerous and varied cases of sudden, unexpected, suspicious, and violent deaths which are continuously being brought to the attention of the Office of the Chief Medical Examiner for investigation. This work is carried on in the Medical Examiner's Office located in the Pathology Building of Bellevue Hospital.

Applicants for this course should arrange their time with Professor Helpern.

ARCHIVES
001
.A
1957-58
2d part

ELECTIVE—HISTORY OF MEDICINE

Claude E. Heaton, M.D., *Associate Professor*

FIRST YEAR

A series of ten weekly lectures on the evolution of medicine from its early beginnings to modern times. The History of Medicine is presented as a part of cultural history stressing the social and economic factors rather than a chronological account of great men and discoveries. This provides a background for the understanding of certain basic philosophic assumptions and scientific theories upon which modern medicine is based.

The lectures are supplemented with lantern slides and with the co-operation of the librarian classic texts are exhibited in the library.

MEDICAL STATISTICS

Donald Mainland, M.B., CH.B., SC.D. [EDINBURGH], *Professor and Chairman of the Department*

Lee F. Herrera, B.S., *Instructor*

Robert Brown, B.S., M.D., *Clinical Instructor in Medicine (assigned to Medical Statistics)*

Instruction in this subject presents the principles necessary for drawing valid conclusions by quantitative methods. Examples from clinical and preventive medicine, laboratory research, medical journals, and the public press demonstrate the importance of sound planning, observation, and recording. The student is shown that, in analyzing results, clear thinking is more important than arithmetical tests, that he must look for bias in sampling, beware of the inaccuracy of laboratory reports, comprehend the meaning of figures, and look for fallacies in causal interpretation. The results of sampling experiments, some of them conducted by students themselves, are used to demonstrate that statistical tests and formulas are merely short cuts to results that could be obtained experimentally.

In order to enhance the students' motivation toward statistical concepts, the instruction this year, instead of being given in a block at one point in the curriculum, is offered, by arrangement with instructors in other departments, at points in any preclinical or clinical course where the relevance of statistical concepts to current work is obvious.

Elective work is available by arrangement with the Associate Dean and departmental chairman.

MEDICINE

- William S. Tillett, A.B., M.D., SC.D. (HON.), *Professor and Chairman of the Department*
 Arthur C. De Graff, B.S., M.D., *Samuel A. Brown Professor of Therapeutics*
 Ludwig W. Eichna, A.B., M.D., *Professor*
 J. Murray Steele, A.B., M.D., *Professor*
 Clarence E. de la Chapelle, B.S. (MED.), M.D., *Professor of Clinical Medicine*
 Joseph E. Connery, M.D., *Professor of Clinical Pathology*
 Milton B. Rosenblüth, A.B., M.D., *Professor of Clinical Medicine*
 Herbert Chasis, A.B., M.D., MED.SC.D., *Associate Professor*
 Saul J. Farber, A.B., M.D., *Associate Professor*
 Morton Galdston, B.S., M.D., *Associate Professor*
 William Goldring, B.S., M.D., *Associate Professor*
 Charles E. Kossmann, B.S., M.D., MED.SC.D., *Associate Professor*
 H. Sherwood Lawrence, A.B., M.D., *Associate Professor*
 Currier McEwen, B.S., M.D., SC.D. (HON.), *Associate Professor*
 Elaine P. Ralli, A.B., M.D., *Associate Professor*
 Morris Ziff, B.S., PH.D., M.D., *Associate Professor*
 Maxwell Schubert, A.B., A.M., PH.D., *Adjunct Associate Professor of Biochemistry (assigned to Medicine)*
 Adolph R. Berger, A.B., M.D., *Associate Professor of Clinical Medicine*
 Anthony A. Bianco, B.S., M.D., *Associate Professor of Clinical Medicine (assigned to Preventive Medicine)*
 Sidney Cohen, A.B., M.D., *Associate Professor of Clinical Medicine*
 Francis J. Lovelock, A.B., M.D., *Associate Professor of Clinical Medicine*
 William J. Messinger, A.B., A.M., M.D., *Associate Professor of Clinical Medicine*
 Joseph Post, B.S., M.D., MED.SC.D., *Associate Professor of Clinical Medicine*
 Hilmert A. Ranges, A.B., M.D., *Associate Professor of Clinical Medicine*
 Walter Redisch, M.D. [GERMAN, PRAGUE], *Associate Professor of Clinical Medicine*
 O. Alan Rose, A.B., M.D., *Associate Professor of Clinical Medicine*
 Margaret H. Tewksbury, A.B., M.D., *Associate Professor of Clinical Pathology*
 Alfred Vogl, M.D. [VIENNA], *Associate Professor of Clinical Medicine*
 Eugene Y. Berger, A.B., M.D., *Assistant Professor*
 Mary E. Dumm, A.B., A.M., PH.D., *Assistant Professor*
 Herbert Gershberg, B.S., M.S., M.D., *Assistant Professor (assigned to Physiology)*
 William N. Hubbard, Jr., A.B., M.D., *Assistant Professor*
 Alan J. Johnson, A.B. (ENG.), A.M. (ZOOLOGY), M.D., *Assistant Professor*
 Herbert J. Kayden, A.B., M.D., *Assistant Professor*
 Barbara Ann Parker, A.B., M.D., *Assistant Professor*
 Bertha Rader, A.B., M.D., *Assistant Professor*
 John J. Burns, B.S., A.M., PH.D., *Adjunct Assistant Professor of Medicine (Biochemistry)*
 Levon F. Ayvazian, A.B., M.D., *Assistant Professor of Clinical Medicine*
 Morris Block, B.S., M.D., *Assistant Professor of Clinical Medicine*
 Joseph Brumlik, M.D. [CHARLES, PRAGUE], *Assistant Professor of Clinical Medicine*
 Eugene Clark, A.B., M.D., *Assistant Professor of Clinical Medicine*
 Harry D. Fein, B.S., M.D., *Assistant Professor of Clinical Medicine*

- Gerald Flaum, A.B., M.D., MED.SC.D., *Assistant Professor of Clinical Medicine (assigned to Syphilology)*
 Morris Kleinfeld, A.B., M.D., *Assistant Professor of Clinical Medicine*
 Stephen H. Leslie, B.S., M.D., *Assistant Professor of Clinical Medicine*
 Gerson T. Lesser, A.B., M.D., *Assistant Professor of Clinical Medicine*
 Hirsch R. Liebowitz, B.S., M.D., *Assistant Professor of Clinical Medicine*
 Evan W. McLave, M.D., *Assistant Professor of Clinical Medicine*
 Leo M. Meyer, B.S., A.M., M.D., *Assistant Professor of Clinical Medicine*
 Edmund D. Pellegrino, B.S., M.D., *Assistant Professor of Clinical Medicine*
 Conrad Rosenberg, B.S., M.D., *Assistant Professor of Clinical Medicine*
 Harry Taube, M.D. [TORONTO], *Assistant Professor of Clinical Medicine*
 Murray Weiner, B.S., M.S., M.D., *Assistant Professor of Clinical Medicine*
 Harold Brandaleone, B.S., M.D., MED.SC.D., *Assistant Clinical Professor of Medicine (assigned to Physical Medicine and Rehabilitation)*
 John H. Ayvazian, A.B., M.D., *Instructor*
 David S. Baldwin, A.B., M.D., *Instructor*
 Sidney Dann, B.S., M.D., *Instructor in Therapeutics*
 Alvin R. Feinstein, B.S., M.S. (MATH.), M.D., *Instructor*
 Arthur Fox, M.D., *Instructor*
 Joseph J. Lospalluto, B.S., PH.D., *Instructor in Biochemistry (assigned to Medicine)*
 Norman Wikler, A.B., M.D., *Instructor*
 George A. Zak, M.D. [VIENNA], *Instructor*
 Frederick R. Brown, A.B., M.D., *Clinical Instructor*
 Robert Brown, B.S., M.D., *Clinical Instructor (assigned to Medical Statistics)*
 Eugene V. Calvelli, A.B., M.D., *Clinical Instructor*
 Max Cytryn, B.S., M.D., *Clinical Instructor*
 Martin Dolgin, A.B., M.D., *Clinical Instructor*
 John H. Donnelly, A.B., M.D., *Clinical Instructor*
 Milton Dworin, B.S., M.D., *Clinical Instructor*
 Paul R. Esserman, A.B., M.D., *Clinical Instructor*
 William D. Franklin, B.S., *Clinical Instructor*
 Charles P. Giel, M.D., *Clinical Instructor*
 Pauline R. Goger, A.B., A.M., PH.D., M.D., *Clinical Instructor*
 Benjamin J. Gruskin, M.D., *Clinical Instructor*
 Roy C. Gumpel, M.D., *Clinical Instructor*
 Jack R. Harnes, M.D., *Clinical Instructor*
 Robert Henderson, M.D., *Clinical Instructor*
 Melvin Hershkowitz, A.B., M.D., *Clinical Instructor*
 Julian B. Hyman, A.B., M.D., *Clinical Instructor*
 Alfred J. Kaltman, A.B., M.D., *Clinical Instructor*
 Philip A. LoPresti, A.B., M.D., *Clinical Instructor*
 Marcus A. Rothschild, B.S., M.D., *Clinical Instructor*
 Aurelia Rozov, M.D. [KOMENSKY], *Clinical Instructor*
 Jerome Simson, A.B., M.D., *Clinical Instructor*
 Bruce J. Sobel, A.B., M.D., *Clinical Instructor*
 Robert J. Soberman, B.S., M.D., *Clinical Instructor*
 Noah Temchin, B.S., M.D., *Clinical Instructor*
 Douglass S. Thompson, A.B., M.D., *Clinical Instructor*
 Stuart H. Bartle, A.B., M.D., *Assistant*

Lawrence Berger, *Assistant*
 Pierre Bopp, M.D. [GENEVA], *Assistant*
 Antonella Brughera, A.B., M.D., *Assistant*
 Hugh J. Carroll, B.S., M.D., *Assistant*
 Francis X. Claps, B.S., M.D., *Assistant*
 Joseph L. Gluck, M.D., *Assistant*
 Richard F. Grady, A.B., M.D., *Assistant*
 Leonard B. Gutner, A.B., A.M., M.D., *Assistant in Therapeutics*
 Joseph Hoffman, A.B., M.D., *Assistant*
 Norman B. Juskowitz, B.S., M.D., *Assistant in Therapeutics*
 Lawrence S. Kryle, A.B., M.D., *Assistant in Therapeutics*
 René F. Pecikyan, M.D., *Assistant*
 Darlyne Pew, M.D., *Assistant*
 Robert Silber, M.D., *Assistant*
 Robert W. Bertcher, M.D., *Clinical Assistant*
 Abraham M. Goldman, A.B., M.D., *Clinical Assistant*
 Marian C. Isaacs, A.B., M.D., *Clinical Assistant*
 Thomas G. Kantor, A.B., M.D., *Clinical Assistant*
 Robert Manheimer, A.B., M.D., *Clinical Assistant*
 Alfred Miller, B.S., M.D., *Clinical Assistant*
 John E. Nichols, B.S., M.D., *Clinical Assistant*
 Houston W. Pratt, B.S. (CHEM.), M.D., *Clinical Assistant*
 Stanley Reichman, M.B., M.D., *Clinical Assistant*
 William M. Stone, A.B., M.D., *Clinical Assistant*
 David Unterman, A.B., M.D., *Clinical Assistant in Therapeutics*
 W. Brewster Wolfe, M.D., *Clinical Assistant*

FIRST YEAR

Correlation Clinic—Throughout the academic year the entire class meets once a week under the direction of the clinical faculty. In this clinic patients are presented and discussed for the purpose of indicating wherein the material concurrently under study in anatomy, biochemistry, and physiology has clinical significance.

SECOND YEAR

Introduction to Clinical Medicine Including Physical Diagnosis—During the second and third trimesters, two hours a week are spent on the wards of Bellevue, Goldwater, or Veterans Administration Hospital. Small groups, assigned to each of several instructors, interview and examine patients. The course begins with history-taking, the determination of normal findings elicited by physical examination, and the physical diagnosis of abnormal states. As the course develops, laboratory procedures, X-ray examinations, and factors of a sociological, environmental, or psychological nature that affect the status of the patient's disease are incorporated in the exercises.

Lectures—During the second trimester, lectures to the whole class are given one hour a week. The lectures begin with a consideration of the technique of history-taking and physical examination. They are subsequently extended to include discussions of the basis and significance of abnormal findings in relation

to anatomical, physiological, chemical, and pathological changes. During the third trimester, two lectures per week of a similar nature are given.

One additional lecture a week is given during the first trimester on the relationship of disturbances of nutrition and vitamin deficiencies to disease. Associate Professor Ralli.

Clinical Pathology—Four hours a week during the third trimester are devoted to laboratory instruction in the microscopical and chemical examination of blood, urine, sputum, vomitus, stomach contents, inflammatory exudates, etc. Two hours a week during the third trimester are devoted to lectures and class exercises. Professor Connery and staff.

A final examination is given at the end of the year in physical diagnosis and clinical pathology.

Correlation clinic—Throughout the calendar year the entire class meets once a week under the direction of the clinical faculty. In this clinic patients are presented and discussed for the purpose of indicating wherein the material concurrently under study in pharmacology, microbiology, and pathology has clinical significance.

THIRD YEAR

Clinical Clerkship—Given throughout the calendar year. Every student serves as a clinical clerk for a period of twelve weeks. In this activity he becomes an integral part of the clinical department engaged in the diagnosis, treatment, and study of patients on the wards of the Third Medical Division of Bellevue Hospital. Except for clinics or special lectures given by different departments for the class as a whole, daily at 11.30 a.m. to 12.30 p.m., the entire time is essentially available for clinical activities and study in relation to the hospitalized patients. Patients on admission to the wards are assigned by the resident physician to students who take histories, make physical examinations, and do some of the required laboratory work. They are then expected to follow the patient's course by daily visits and examinations. Bedside teaching for students is conducted three times a week by the attending physician in charge of the ward.

A group seminar is held weekly, Thursdays, 1.30 to 2.30 p.m., for the purpose of discussing selected points of special interest.

A clinical pathological conference for the whole third-year class is held on Saturdays, 11.30 a.m. to 1 p.m., in collaboration with the Department of Pathology. A formal medical clinic for the whole class is held on Tuesdays from 11.30 a.m. to 12.30 p.m.

A final written examination is given at the end of the year.

FOURTH YEAR

The teaching in internal medicine centers about the outpatient clinics at Bellevue Hospital. The period of this activity is eight weeks for each student.

All clinic sessions, held in the afternoon, are of three hours' duration. Each student attends, per week, two sessions in the general medical clinic, which meets daily, and one session in each of two specialty clinics, which meet once a week. The specialty clinics include arthritis, diabetes and metabolic disorders, gastroenterology, hematology, neoplasia, and others. In one of his general medical clinic sessions the student works up new patients, in the other sessions

he continues the follow-up care of patients previously seen by him. Many students also elect to attend the adult cardiac clinic one night per week.

In each clinic, students are assigned patients and under guidance become "responsible" for the total care of the patient. This includes the history, physical examination, and laboratory tests on the initial visit, follow-up care on return visits, including attendance at consultations in other clinics or with dietitian and social worker, and follow-up on the ward if the patient becomes hospitalized. During each clinic session a group meeting is held to discuss the problems presented by chosen patients.

In addition to this clinic teaching, each student participates during his eight-week period in eight combined medical-surgical conferences, four medical-X-ray conferences, and in four medical seminars of two hours' duration devoted to some phase of medicine and attends once weekly a clinical-pathological conference.

Once a week throughout the year the entire fourth-year class attends a therapeutic conference in which the approach to the treatment of the patient as a whole is considered and integrated from the standpoint of the internist, the surgeon, the specialist in other fields, the psychiatrist, and the social worker. Once monthly the entire class meets in a combined clinic in which clinical problems are discussed from the standpoint of preclinical and clinical disciplines, with members of both faculties participating in the discussion.

A final examination is given at the end of the year.

ELECTIVES

Elective work is available by arrangement with the Associate Dean and the departmental chairman.

MICROBIOLOGY

Alwin M. Pappenheimer, Jr., B.S., PH.D., *Professor and Chairman of the Department*

George K. Hirst, B.S., M.D., *Adjunct Professor*

Efraim Racker, M.D. [VIENNA], *Adjunct Professor*

Walter L. Barksdale, A.B., A.M., PH.D., *Associate Professor*

Alan W. Bernheimer, B.S., A.M., PH.D., *Associate Professor*

L. Royal Christensen, B.S., PH.D., *Associate Professor*

Werner K. Maas, A.B., PH.D., *Associate Professor*

James E. Ziegler, Jr., A.B., M.D., *Associate Professor*

Philip Y. Paterson, B.S., M.B., M.D., *Assistant Professor*

Annamarie Torriani, PH.D., *Research Associate*

William R. Sistrom, A.B., PH.D., *Instructor*

Angelo Taranta, M.D. [ROME], *Instructor*

Jonathan W. Uhr, A.B., M.D., *Instructor*

Amy S. Roe, A.B., M.S., *Assistant*

Edelmira D. Hendee, A.B., *Assistant*

SECOND YEAR

First and Second Trimesters

The course in medical microbiology is concerned with the study of bacteria, viruses, and fungi as agents of infectious disease. Topics considered include methods for isolation and identification of pathogenic organisms, mechanisms of pathogenesis and the response of the host to infection, the phenomena of specific immunity including the related topics of hypersensitivity and blood typing, the mode of action of chemotherapeutic agents, microbial genetics in relation to resistance to chemotherapy, alterations in virulence and changes in other physiological properties, and microbial physiology.

ELECTIVES

Problems in immunology, hypersensitivity, bacteriology, virology, microbial genetics, and other fields present possibilities for productive research during the student's free time. Arrangements for elective work should be made with the Associate Dean and the departmental chairman.

NEUROSURGERY

Given by the Department of Neurosurgery of the
Post-Graduate Medical School

Thomas I. Hoen, A.B., M.D., *Professor and Chairman of the Department*
Irving S. Cooper, A.B., M.S., PH.D., M.D., *Professor of Clinical Neurosurgery*
Francis A. Echlin, M.S., M.D., C.M. [MCGILL]; MED.S.C.D., *Professor of Clinical Neurosurgery*
James T. Daniels, M.D., *Associate Professor of Clinical Neurosurgery*
Stanley Stellar, A.B., M.D., *Assistant Professor*
Thomas Q. Garvey, Jr., B.S., M.D., *Assistant Professor of Clinical Neurosurgery*
Carlos G. de Gutierrez-Mahoney, A.B., M.D., *Clinical Professor*
Sidney W. Gross, A.B., M.D., *Assistant Clinical Professor*
Francis J. O'Neill, B.S., M.D., *Assistant Clinical Professor*
Arthur F. Battista, B.S., M.D., C.M. [MCGILL], M.S. [WESTERN ONTARIO], *Instructor*
Gonzalo Juan Bravo, *Instructor*
George M. Burlo, M.D. [BUENOS AIRES], *Instructor*
S. Vincent Sordillo, A.B., M.D., *Instructor*
David Fairman, M.D. [BUENOS AIRES], *Clinical Instructor*
I. Melbourne Greenberg, A.B., A.M., M.D., *Assistant*
Sidney Merlis, B.S. (MED.), M.D., *Assistant*

FOURTH YEAR

Clinic and conference sessions are held during the clerkship in general surgery. Professor Hoen and staff.

ELECTIVES

Elective work is available by arrangement with the Associate Dean and the departmental chairman.

OBSTETRICS AND GYNECOLOGY

Gordon Watkins Douglas, A.B., M.D., *Professor and Chairman of the Department*
Gray H. Twombly, A.B., M.D., SC.D. (HON.), *Professor of Gynecology*
Locke L. MacKenzie, A.B., M.D., *Professor of Clinical Obstetrics and Gynecology*
Claude E. Heaton, M.D., *Associate Professor*
Emanuel L. Hecht, B.S., M.D., *Associate Professor of Clinical Obstetrics and Gynecology (on leave of absence)*
Raymond P. Nolan, B.S., M.D., *Assistant Professor*
Mortimer Levitz, B.S., A.M., PH.D., *Assistant Professor of Research Obstetrics and Gynecology (Chemistry)*
Herman W. Rannels, B.S., M.D., *Assistant Professor of Clinical Obstetrics and Gynecology*
George L. Bowen, A.B., M.D., *Clinical Professor*
Myron E. Goldblatt, A.B., M.D., *Clinical Professor*
John C. Kilroe, A.B., M.D., *Clinical Professor*
Sophia J. Kleegman, M.D., *Clinical Professor*
Mortimer D. Speiser, M.D., *Clinical Professor*
Irwin Wellen, M.D., *Clinical Professor*
Louis A. Bunim, M.D., *Associate Clinical Professor*
Matthew Di Georgi, M.D., *Associate Clinical Professor*
William Filler, B.S., M.D., *Associate Clinical Professor*
Michael J. Jordan, B.S., M.D., *Associate Clinical Professor*
Ernest W. Kulka, M.D. [VIENNA], *Associate Clinical Professor*
John S. Labate, B.S., M.D., MED.S.C.D., *Associate Clinical Professor*
Herman H. Lardaro, M.D., *Associate Clinical Professor*
Robert J. Lowrie, A.M.; M.B., M.D. [TORONTO], *Associate Clinical Professor*
Theodore Neustaedter, M.D., *Associate Clinical Professor*
Leo O'Donnell, PH.B., M.D., *Associate Clinical Professor*
Bernard J. Pisani, A.B., M.D., *Associate Clinical Professor*
Mortimer W. Rodgers, B.S. (MED.), M.D., *Associate Clinical Professor*
Samuel Schmerzler, M.D., *Associate Clinical Professor*
Melvin L. Stone, B.S., M.D., MED.S.C.D., *Associate Clinical Professor*
Joseph N. Tesi, M.D. [FLORENCE], *Associate Clinical Professor*
Irving Abelow, B.S., M.D., *Assistant Clinical Professor*
Benedict B. Benigno, B.S. (BIOLOGY), M.D., *Assistant Clinical Professor*
Robert Berman, PH.B., M.D., *Assistant Clinical Professor*
Louis C. Blaha, M.D., *Assistant Clinical Professor*
George Blinick, B.S., M.D., *Assistant Clinical Professor*
Louise M. Dantuono, A.B., M.D., *Assistant Clinical Professor*
Wayne H. Decker, M.D., *Assistant Clinical Professor*
Joseph De Pietro, M.D., *Assistant Clinical Professor*
G. Thurman Fulmer, B.S., M.D., *Assistant Clinical Professor*
W. Spencer Gurnee, M.D., *Assistant Clinical Professor*
Stuart C. Heaton, B.S., M.D., *Assistant Clinical Professor*
Irving T. Michaels, B.S., M.D., *Assistant Clinical Professor*
Gottfried Neumann, M.D. [LEIPZIG], *Assistant Clinical Professor*
Georgia Reid, A.B., M.D., *Assistant Clinical Professor*
Emanuel M. Wainess, M.D., *Assistant Clinical Professor*
David E. Warden, A.B., M.D., *Assistant Clinical Professor*

Bernard A. G. Weisl, B.S., M.D., *Assistant Clinical Professor*
 Ben B. Wetchler, B.S., M.S., M.D., *Assistant Clinical Professor*
 John D. Angelides, B.S., M.D., *Clinical Instructor*
 Gerald S. Barad, A.B., M.D., *Clinical Instructor*
 Elliott D. Blumenthal, Jr., B.S., M.D., *Clinical Instructor*
 David L. Bobker, B.S., *Clinical Instructor*
 Leonard F. Ciner, B.S., M.D., *Clinical Instructor*
 Martin J. Clyman, B.S., M.D., *Clinical Instructor*
 Robert M. Cushing, B.S., M.D., *Clinical Instructor*
 Jerome A. Dolan, A.B., M.D., *Clinical Instructor*
 Jacob Donshik, B.S., M.D., *Clinical Instructor*
 John C. DuBois, A.B., M.D., *Clinical Instructor*
 William J. Farrell, B.S., M.D., *Clinical Instructor*
 Wilton G. Fritz, M.D., *Clinical Instructor*
 Louis Gordon, M.D., *Clinical Instructor*
 Frank J. Hardart, Jr., A.B., M.D., *Clinical Instructor*
 Morton K. Hertz, M.D., *Clinical Instructor*
 Charles H. Immordino, B.S., M.D., *Clinical Instructor*
 Heinz L. Luschinsky, M.D. [GENEVA], *Clinical Instructor*
 Nina M. Mazzola, A.B., M.D., *Clinical Instructor*
 John Messina, M.D. [NAPLES], *Clinical Instructor*
 Stefano Miele, M.D. [NAPLES], *Clinical Instructor*
 James R. Nealon, B.S. (BIOLOGY), M.D., *Clinical Instructor*
 Samuel Ratowsky, B.S., M.D., *Clinical Instructor*
 Oscar Schneller, M.D., MED.SC.M., *Clinical Instructor*
 Maxwell Schram, B.S., M.D., *Clinical Instructor*
 Lee F. Vosburgh, B.S. (BIOLOGY), M.D., *Clinical Instructor*
 Irwin Weiner, A.B., M.D., *Clinical Instructor*
 Bruno W. Zaneski, M.D., *Clinical Instructor*
 Daniel W. Colburn, A.B., M.B., M.D., *Assistant*
 Milton G. Potter, Jr., A.B., M.D., *Assistant*
 Richard H. Small, A.B., M.D., *Assistant*
 George J. Calvelli, Jr., B.S., M.D., *Clinical Assistant*
 Jere B. Faison, A.M., M.B., CH.B. [GLASGOW], *Clinical Assistant*
 Jack Iger, B.S., M.D., *Clinical Assistant*
 David E. Landers, M.D., *Clinical Assistant*
 Edward R. Laus, M.D., *Clinical Assistant*
 Arthur N. Miller, B.S., M.D., *Clinical Assistant*
 Murray I. Neustadter, A.B., M.D., *Clinical Assistant*
 Donald E. Rock, M.D., *Clinical Assistant*
 Feliciano J. Scire, M.D. [NAPLES], *Clinical Assistant*
 Joseph F. Shanaphy, B.S. (BIOLOGY), M.D., M.S. (OBSTETRICS AND GYNECOLOGY),
Clinical Assistant

THIRD YEAR

The teaching of obstetrics in the third year is devoted to a theoretical study of normal pregnancy, labor, and the puerperium by means of lectures and assigned reading.

The teaching of gynecology during the same period is devoted to a theoretical

study of the physiology of the female reproductive tract and the common diseases affecting this region. This is accomplished by lectures.

FOURTH YEAR

During the fourth year groups of approximately thirty students report to the Obstetrical and Gynecological Service of Bellevue Hospital every eight weeks.

One half of each group is assigned to obstetrics for four weeks to serve as clinical clerks. Two weeks are spent on night duty and two weeks on day duty, the night and the day work being equally divided by a shift at the end of a two-week period. While on this assignment, each student delivers personally at least six multiparous patients and assists in many other cases. Each individual should see about sixty deliveries during his time on service. History-taking and physical examinations as well as laboratory work are part of the student's duties. During this period the abnormalities of pregnancy, labor, and the puerperium are presented and illustrated with the available clinical material.

The other half of the group is assigned to the gynecological service and outpatient department for four weeks. Each day two students are assigned to twenty-four hour duty during which period they take histories, perform physical examinations, and carry out the necessary laboratory procedures on all new admissions. Sleeping quarters are provided so that they may be called at night. Each student goes through four or five of these assignments during his clerkship, and works up five to seven cases during each of them. During the balance of their morning hours they follow these cases during their course on the ward, take part in informal discussions with the attendings, and are permitted to scrub up in the operating room should their patients be subjected to operation.

An intensive course in obstetrical and gynecological pathology is conducted during the combined clerkship.

In the afternoons these students are assigned to the antepartum clinic with the exception of the two students who are on active twenty-four hour duty.

At the end of four weeks the obstetrical and gynecological groups exchange their assignments.

A practical examination is conducted at the end of the combined clerkship.

ELECTIVES

Elective work is available by arrangement with the Associate Dean and the departmental chairman.

OPHTHALMOLOGY

Given by the Department of Ophthalmology of the
Post-Graduate Medical School

- A. Gerard DeVoe, A.B., M.D., MED.SC.D., *Professor and Chairman of the Department*
 Rudolf Aebli, A.B., M.D., *Professor of Clinical Ophthalmology*
 Goodwin M. Breinin, B.S., A.M., M.D., *Associate Professor*
 George N. Wise, B.S., M.D., MED.SC.D., *Associate Professor*
 Helena T. Fedukowicz, PHYSICIAN [JEKATERINOSLAW], *Assistant Professor*
 Milton L. Berliner, M.D., *Clinical Professor*
 Girolamo Bonaccolto, M.D. [ROME], *Clinical Professor*
 Harold W. Brown, B.S., M.D., *Clinical Professor*
 Ramon Castroviejo, DOC. EN MED. [MADRID], DOC.HON. [SAN MARCOS, SANTO DOMINGO], *Clinical Professor*
 W. Guernsey Frey, Jr., A.B., M.D., *Clinical Professor*
 Wendell L. Hughes, M.D., SC.D. (HON.) [WESTERN ONTARIO], *Clinical Professor*
 Raymond E. Meek, B.S. (MED.), M.D., *Clinical Professor (on leave of absence)*
 R. Townley Paton, B.S., M.D., *Clinical Professor*
 Brittain F. Payne, A.B., M.D., *Clinical Professor*
 Ervin A. Tusak, M.D. [GERMAN, PRAGUE], *Clinical Professor*
 J. Gordon Cole, B.S., M.B., M.D., *Associate Clinical Professor*
 Frank H. Constantine, A.B., M.D., *Associate Clinical Professor*
 Gerald E. Fonda, B.S., M.D., *Associate Clinical Professor*
 Sidney A. Fox, A.B., M.D., M.S. (OPHTHAL.), *Associate Clinical Professor*
 Bernard Fread, B.S., M.D., *Associate Clinical Professor*
 Isadore Givner, B.S. (MED.), M.D., *Associate Clinical Professor*
 Abraham Kornzweig, A.B., M.D., *Associate Clinical Professor*
 Bernard Kronenberg, B.S., M.D. [BERN], *Associate Clinical Professor*
 Arthur Linksz, M.D. [KIEL], MED.SC.D. [PÉCS], *Associate Clinical Professor*
 Walter J. Maher, A.B., M.D., *Associate Clinical Professor*
 Hunter H. Romaine, M.D., *Associate Clinical Professor*
 Anthony A. Scimeca, M.D., *Associate Clinical Professor*
 Byron C. Smith, B.S., M.D., *Associate Clinical Professor*
 Frederick H. Theodore, A.B., M.D., *Associate Clinical Professor*
 Domenico Cappetta, M.D. [FLORENCE], *Assistant Clinical Professor*
 Isadore S. Edelstein, B.S., M.D., *Assistant Clinical Professor*
 Donald A. Fonda, M.D., *Assistant Clinical Professor*
 A. Marvin Gillman, A.B., M.S. (PUB. HEALTH), M.D., *Assistant Clinical Professor*
 James M. Houlahan, A.B., M.D., *Assistant Clinical Professor*
 Joseph H. Krug, A.B., M.D., *Assistant Clinical Professor*
 Jack V. Lisman, B.S., M.D., *Assistant Clinical Professor*
 John R. Roche, A.B., M.D., *Assistant Clinical Professor*
 Walter S. Atkinson, M.D., C.M. [MCGILL], *Lecturer*
 Conrad Berens, M.D., *Lecturer*
 Alfred Kestenbaum, M.D. [VIENNA], *Lecturer*
 Harris Ripps, B.S., M.S., A.M., *Instructor in Physiological Optics*
 Myron Charlap, A.B., M.D., *Instructor in Clinical Ophthalmology*
 Irwin J. Cohen, A.B., M.D., *Instructor in Clinical Ophthalmology*

- Robert S. Coles, A.B., M.D., *Instructor in Clinical Ophthalmology*
 Brian J. Curtin, B.S., M.D., *Instructor in Clinical Ophthalmology*
 William L. Donnelly, M.D., *Instructor in Clinical Ophthalmology*
 William J. Garvin, A.B., M.D., *Instructor in Clinical Ophthalmology*
 Gabriel J. Greco, B.S., M.D., *Instructor in Clinical Ophthalmology*
 Benjamin B. Gurland, B.S., M.D., *Instructor in Clinical Ophthalmology*
 William R. Houston, A.B., M.D., *Instructor in Clinical Ophthalmology*
 Joseph Hyman, B.S., M.D., *Instructor in Clinical Ophthalmology*
 Harvey A. Lincoff, A.B., M.D., *Instructor in Clinical Ophthalmology*
 Ernst L. Metzger, M.D. [FRANKFURT], *Instructor in Clinical Ophthalmology*
 James F. X. O'Rourke, B.S., M.D., *Instructor in Clinical Ophthalmology*
 Bernard L. Spitz, A.B.; M.D. [GENEVA], *Instructor in Clinical Ophthalmology*
 Howard K. Weisberg, A.B., M.D., *Instructor in Clinical Ophthalmology*
 Leon M. Weiss, B.S., M.D., *Instructor in Clinical Ophthalmology*
 Milton M. Zaret, A.B., M.D., *Instructor in Clinical Ophthalmology*
 Joshua Zuckerman, B.S., M.D., C.M. [MCGILL], *Instructor in Clinical Ophthalmology*
 Arnold S. Breakey, A.B., M.D., *Clinical Instructor*
 George Z. Carter, PHYSICIAN [JAGELLA], *Clinical Instructor*
 Frederic H. Deutsch, A.B., M.D., *Clinical Instructor*
 Richard W. Greene, A.B., M.D., *Clinical Instructor*
 Gerald B. Kara, A.B., M.D., *Clinical Instructor*
 Francis C. Keil, Jr., A.B., M.D., MED.SC.D., *Clinical Instructor*
 David B. Kimmelman, A.B., M.D., *Clinical Instructor*
 David L. Krohn, A.B., M.D., *Clinical Instructor*
 Jesse W. Overton, B.S., M.D., *Clinical Instructor*
 Almerindo G. Portfolio, A.B., M.D., M.S. (OPHTHAL.), *Clinical Instructor*
 Bernard A. Roberts, B.S., M.D., *Clinical Instructor*
 John T. Simonton, A.B., M.D., *Clinical Instructor*
 Chih-Chiang Teng, M.D. [NATIONAL MEDICAL, SHANGHAI], *Clinical Instructor*
 Bernard M. Teschner, A.B., M.D., *Clinical Instructor*
 Gilbert Baum, A.B., M.D., *Clinical Assistant*
 Charles W. Boozan, A.B., M.D., *Clinical Assistant*
 Nicholas J. Daukas, A.B., M.D., *Clinical Assistant*
 John R. Finlay, B.S., M.D., *Clinical Assistant*
 Edwin M. Miller, A.B., M.D., *Clinical Assistant*
 Walter S. Schachat, B.S., M.D., *Clinical Assistant*

FIRST YEAR

Two lectures are given on the anatomy and physiology of the eye by members of the department. The didactic talks are given as part of the courses in general anatomy and physiology.

An additional hour is devoted to a Correlation Clinic on Diseases of the Eye, with emphasis on the clinical aspects of applied anatomy and physiology. Patients are used to demonstrate salient points and a variety of colored lantern slides are used to introduce the class to clinical ophthalmology.

SECOND YEAR

Three didactic lecture hours are devoted to a study of physical diagnosis in ophthalmology. These are illustrated with lantern slides.

The class is divided into small groups, each with its own individual clinical instructor, and three clinical sessions of two or more hours each are given in the outpatient department of Bellevue Hospital.

The course in ophthalmology places emphasis on the clinical examination of the external and internal eye. Preliminary lectures cover the various techniques used for examination, including the discussion of various instruments used for accurate assessment of the normal and abnormal ocular functions. Clinical sessions at Bellevue Hospital are held in small groups. Emphasis is placed on examination of the media and fundi of the eye with the electric ophthalmoscope.

THIRD YEAR

Two clinical sessions of two or more hours each make a total of four hours minimum.

Each group has one or two instructors so that the students are given guidance in medical ophthalmology.

The third year is mainly devoted to medical ophthalmology and consists of clinical sessions in the medical wards. Ocular signs and symptoms of various systemic diseases are emphasized.

FOURTH YEAR

For the current academic year, ophthalmology is available only as an elective. The students elect ophthalmology and ear, nose, and throat for a period of two or more weeks. Two weeks are spent in all-day sessions in ophthalmology and two weeks in ear, nose, and throat.

In the mornings, the student may visit the wards at Bellevue Hospital and not only see patients but also receive didactic talks by members of the house staff.

In the afternoons, the time is spent in the eye clinics. Special individual instruction is given in clinical ophthalmology by the attending ophthalmologists. Each student gets a comprehensive picture of medical and surgical ophthalmology and becomes familiar with the use of the ophthalmoscope and the various techniques for the clinical examination of the eye.

ORTHOPEDIC SURGERY

Given by the Department of Orthopedic Surgery of the
Post-Graduate Medical School

- Walter A. L. Thompson, M.D., *Professor and Chairman of the Department*
John C. McCauley, Jr., B.S., M.D., *Professor*
George Anopol, M.D., *Professor of Clinical Orthopedic Surgery*
Raphael R. Goldenberg, M.D. [TORONTO], *Associate Professor of Clinical Orthopedic Surgery*
Otho C. Hudson, B.S., M.D., *Associate Professor of Clinical Orthopedic Surgery*
Constantine L. Jeannopoulos, A.B.; M.D. [ROME], *Associate Professor of Clinical Orthopedic Surgery*
Beckett M. Howorth, B.S., M.D., M.D., M.D., *Clinical Professor*
Wm. Hadden Irish, M.D., *Clinical Professor*
Ernst W. Bergmann, M.D. [ERLANGEN], *Associate Clinical Professor*
Irving V. Glick, A.B., M.D., *Associate Clinical Professor*
Alvin Hulnick, A.B., M.D., *Associate Clinical Professor*
Robert L. Preston, B.S., M.D., *Associate Clinical Professor*
Marvin A. Stevens, B.S. (HON.), PH.B., M.D., M.D., M.D., *Associate Clinical Professor*
William A. Walker, A.B., M.D., *Associate Clinical Professor*
Albert B. Accetola, B.S., M.D., *Assistant Clinical Professor*
Arthur I. Blieden, B.S., M.B., M.D., *Assistant Clinical Professor*
Joseph Buchman, B.S., M.D., *Assistant Clinical Professor*
Robert M. Erdman, M.R.C.S. [LONDON], *Assistant Clinical Professor*
Frederick J. Knocke, A.B., M.D., *Assistant Clinical Professor*
Harvey P. Kopell, A.B., M.D., *Assistant Clinical Professor*
S. Harold Nickerson, B.S., M.D., C.M. [MCGILL], *Assistant Clinical Professor*
Anthony J. Pisani, B.S., M.D., *Assistant Clinical Professor*
Irvine I. Redler, M.D. [KAZIMIERZA, LWÓW], M.D. [BOLOGNA], *Assistant Clinical Professor*
Robert M. Richman, A.B., M.D., *Assistant Clinical Professor*
Mario E. Stella, B.S., M.D., *Assistant Clinical Professor*
David M. Bosworth, A.B., M.D., *Lecturer*
Alvin M. Arkin, B.S., M.D., M.S. (ORTHOPEDIC SURGERY), *Instructor*
Maccabae Boorstein, B.S., M.D., *Instructor*
John T. Croft, M.D., *Instructor*
Ralph Lusskin, B.S., M.D., *Instructor*
Shiva D. Sanwal, M.B.B.S., M.S. (SURGERY) [AGRA], *Instructor*
Albert J. Schein, B.S., M.D., *Instructor*
Sagar D. Sikand, M.B., B.S. [PUNJAB], *Instructor*
John P. Stump, A.B., M.D., *Instructor*
George Truchly, M.D. [INNSBRUCK], *Instructor*
Harry Weiner, M.D., *Instructor*
Emanuel Blumenfeld, B.S., M.D., *Instructor in Clinical Orthopedic Surgery*
Jacob J. Graham, B.S., M.D., *Instructor in Clinical Orthopedic Surgery*
Francis T. Linder, B.S., M.D., *Instructor in Clinical Orthopedic Surgery*
Philip J. Palazzo, B.S., M.D., *Instructor in Clinical Orthopedic Surgery*
Anthony J. Persico, A.B., M.D., *Instructor in Clinical Orthopedic Surgery*

Daniel E. Russo, B.S.; M.D. [LAVAL], *Instructor in Clinical Orthopedic Surgery*
 Herbert M. Simonson, B.S., M.D., M.S. (ORTHOPEdic SURGERY), *Instructor in Clinical Orthopedic Surgery*
 Wilfred Yoslow, A.B., M.D., *Instructor in Clinical Orthopedic Surgery*
 Ernest Stich, A.B., M.D., *Assistant in Clinical Orthopedic Surgery*

SECOND YEAR

Lectures and patient demonstrations in the special techniques of examination of the patient as related to orthopedic surgery are offered during the third semester of the second year.

THIRD YEAR

While serving the surgical clerkship, the clerks meet frequently in small groups with instructors from the Department of Orthopedic Surgery. Common orthopedic problems related to total patient care are discussed.

ELECTIVES

Elective work is available by arrangement with the Associate Dean and the departmental chairman.

OTORHINOLARYNGOLOGY

Given by the Department of Otorhinolaryngology of the
 Post-Graduate Medical School

John F. Daly, A.B., M.D., *Professor and Chairman of the Department*
 Paul S. Seager, A.B., M.D., *Professor of Clinical Otorhinolaryngology*
 James B. Shannon, M.D., *Professor of Clinical Otorhinolaryngology*
 Joseph Elmer Hawkins, Jr., A.B.; A.B. [OXON.], PH.D., *Associate Professor*
 Miles Atkinson, M.B., B.S. [LONDON], *Associate Professor of Clinical Otorhinolaryngology*
 John C. Cardona, A.B., M.D., *Associate Professor of Clinical Otorhinolaryngology*
 William W. Morrison, M.D. [WESTERN ONTARIO], *Associate Professor of Clinical Otorhinolaryngology*
 Alexander Feher, M.D. [VIENNA], *Assistant Professor of Otorhinolaryngology*
 Francis Kwok, M.D. [ST. JOHN'S, SHANGHAI], *Assistant Professor of Clinical Otorhinolaryngology*
 Walter Petryshyn, A.B., M.D., *Assistant Professor of Clinical Otorhinolaryngology*
 Arthur J. Cracovaner, A.B., M.D., *Clinical Professor*
 Daniel S. Cuning, M.D., *Clinical Professor*
 J. Swift Hanley, A.B., M.D., C.M. [QUEEN'S, KINGSTON], *Clinical Professor*
 Girard F. Oberrender, B.S., M.D., *Clinical Professor*
 David Bernstein, B.S., M.D., *Associate Clinical Professor*
 Greydon G. Boyd, A.B., B.S., M.D., *Associate Clinical Professor*
 David I. Frank, M.D., *Associate Clinical Professor*
 Joseph H. Hersh, B.S., M.D., *Associate Clinical Professor*
 William J. Hochbaum, A.B., M.D., *Associate Clinical Professor*
 Earl F. Limbach, A.B., M.D., *Associate Clinical Professor*
 Murray Abrams, B.S., M.D., *Assistant Clinical Professor*
 William B. Allan, B.S., M.D., *Assistant Clinical Professor*
 Richard J. Bellucci, B.S., M.S., M.D., *Assistant Clinical Professor*
 Ward C. Denison, M.D., *Assistant Clinical Professor*
 Wilbur J. Gould, B.S., M.D., *Assistant Clinical Professor*
 Leon Greenberg, B.S., M.D., *Assistant Clinical Professor*
 Alexander F. Laszlo, M.D. [BUDAPEST], *Assistant Clinical Professor*
 Anthony Nigro, M.D., *Assistant Clinical Professor*
 Max Rabbiner, B.S. (MED.), M.D., *Assistant Clinical Professor*
 John Henry T. Rambo, M.D., *Assistant Clinical Professor*
 Leo P. Reckford, M.D. [VIENNA], *Assistant Clinical Professor*
 Alan A. Scheer, A.B., M.D., *Assistant Clinical Professor*
 Max L. Som, B.S., M.D., *Assistant Clinical Professor*
 Darrell G. Voorhees, B.S., M.D., *Assistant Clinical Professor*
 Ernest A. Weymuller, B.S., M.D., *Assistant Clinical Professor*
 Joseph E. Zbar, A.B., M.D., C.M. [QUEEN'S, KINGSTON], *Assistant Clinical Professor*
 Donald M. Markle, B.S., ED.M., *Instructor (Audiology)*
 Godfrey E. Arnold, M.D. [VIENNA], *Clinical Instructor*
 Rector T. Davol, A.B., M.D., *Clinical Instructor*
 Samuel Eisenberg, B.S.; M.D. [VIENNA], *Clinical Instructor*

Louise Fischer, B.S., M.D., *Clinical Instructor*
 Cyril Fox, B.S.; M.D. [MONTREAL], *Clinical Instructor*
 Otto Gambacorta, A.B., M.D., *Clinical Instructor*
 Edward S. Orzac, M.D., *Clinical Instructor*
 Frank J. Riccio, B.S.; M.D. [ROME], *Clinical Instructor*
 Morris M. Rossman, A.B., M.D., *Clinical Instructor*
 Irvin E. Sadoff, M.D., *Clinical Instructor*
 Roy T. Shults, A.B., M.D., *Clinical Instructor*
 Adolph Wehrli, M.D. [ZURICH], *Clinical Instructor*
 Laszlo Csovanyos, A.B. [CEGLED], M.D. [BUDAPEST], *Assistant*
 John McClear, *Assistant (Esophageal Voice Therapy)*
 Ara Bohcali, TIP.DOK.DIP. [ISTANBUL], *Clinical Assistant*
 Gerald Kaplan, M.D., *Clinical Assistant*

FIRST YEAR

The students receive lectures on the functional anatomy of the ear, nose, and throat during the third trimester of the first year. (Two lecture hours.)

SECOND YEAR

A series of three lectures and two clinical teaching sessions are given by the Department of Otorhinolaryngology while the students are studying physical diagnosis to acquaint them with the otolaryngological examination of the patient. The students are taught the use of special instruments and techniques and the normal clinical findings.

THIRD YEAR

The anatomical-physiological basis for the understanding of disease processes that occur in the ear, nose, throat, larynx, tracheobronchial tree, and esophagus are presented in a series of three sessions on the medical wards. The students are given the opportunity to present the specific otorhinolaryngological problems of their assigned patients to the consulting otolaryngologist while they are clinical clerks on the medical service. The problems of diseases of the ear, nose, and throat are presented as part of the complete medical work-up of the patient. (Three ward sessions—six hours.)

ELECTIVE FOR THIRD AND FOURTH YEARS

Actual experience in the diagnosis and management of common clinical entities in the head and neck region and otolaryngology is offered to the student as an elective. The student works as part of the team in the Out-patient Department and on the wards. The object of the elective is to give the student confidence in approaching the solution of problems in this area.

PATHOLOGY

Lewis Thomas, B.S., M.D., *Professor and Chairman of the Department*
 Marvin Kuschner, A.B., M.D., *Professor*
 Maurice N. Richter, B.S., M.D., *Professor*
 Chandler A. Stetson, Jr., B.S., M.D., *Professor*
 Sigmund L. Wilens, B.S., M.D., *Professor*
 Armine T. Wilson, B.S., M.D., *Adjunct Professor*
 Norman S. Cooper, A.B., M.D., *Associate Professor*
 Irwin H. Feigin, A.B., M.D., *Associate Professor of Neuropathology*
 William E. Loring, B.S. (CHEM.), M.D., *Associate Professor*
 Robert T. McCluskey, A.B., M.D., *Associate Professor*
 Benjamin W. Zweifach, B.S., M.S., PH.D., *Associate Professor*
 Baruj Benacerraf, B.S., M.D., *Assistant Professor*
 Howard Green, M.D. [TORONTO]; M.S. (PHYSIOLOGY), *Assistant Professor of Chemical Pathology*
 Philip H. Prose, B.S.; M.D. [LAUSANNE], *Assistant Professor*
 Daniel Roth, A.B., M.D., *Assistant Professor*
 Evelyn Kivy Rosenberg, A.B., A.M., PH.D., *Adjunct Assistant Professor*
 William A. Antopol, B.S., M.D., *Clinical Professor*
 Stanley Gross, B.S., M.D., *Associate Clinical Professor*
 Antonio Rottino, B.S., M.D., *Associate Clinical Professor*
 I. Jerome Silverman, B.S., M.D., *Associate Clinical Professor*
 Edwin V. Olmstead, A.B., M.D., *Assistant Clinical Professor*
 Therese J. Breckx, DOC. EN MED. [GENT.], *Instructor (on leave of absence)*
 Jamil R. Haddad, M.B., B.S. [IRAQ], *Instructor*
 Dicran Y. Kassouny, A.B.; A.B. (MED.), M.D. [BEIRUT], *Instructor*
 Michael J. Lyons, M.D., *Instructor*
 Henry G. Schmidt, Jr., M.D., *Instructor*
 Lawrence P. Shea, A.B., M.D., *Instructor*
 Theodore T. Tsaltas, PHYSICIAN [ATHENS], *Instructor*
 Ambrose P. Boyle, B.S., M.D., *Assistant*
 Gloria R. Gallo, A.B., M.S., M.D., *Assistant*
 David H. Lobdell, A.B., M.D., *Assistant*
 Mario E. Ravelo, DOC. EN MED. [SANTO DOMINGO], *Assistant*

SECOND YEAR

The course consists of lectures, demonstrations of gross material, and the study of histologic preparations illustrating fundamental pathologic processes and lesions of the various organ systems including neuropathology. Especial emphasis is given to the correlation between lesions and clinical aspects of the diseases studied.

During the course, groups of students study abundant fresh material in the necropsy rooms of Bellevue Hospital. Subsequently the histological findings in each case are presented and the case reviewed.

THIRD AND FOURTH YEARS

Weekly clinical pathologic conferences are held under the supervision of the Department of Pathology with the co-operation of members of the clinical departments.

In collaboration with the Department of Surgery short courses in surgical pathology are given to the students in the third and fourth years.

ELECTIVES

Opportunity is offered a limited number of students with special aptitude, by arrangement with the Associate Dean and the departmental chairman, to work in laboratories during their free time after the completion of their second year.

PEDIATRICS

- L. Emmett Holt, Jr., A.B., M.D., *Professor and Chairman of the Department*
 Robert Ward, A.B., M.D., *Professor*
 Edith Maas Lincoln, A.B., M.D., *Adjunct Professor*
 Harry Bakwin, B.S., M.D., *Professor of Clinical Pediatrics*
 Janet S. Baldwin, A.B., M.D., *Associate Professor*
 Joseph Dancis, A.B., M.D., *Associate Professor*
 Saul Krugman, M.D., *Associate Professor*
 Ann G. Kuttner, B.S., PH.D., M.D., *Associate Professor*
 Jonathan T. Lanman, B.S., M.D., *Associate Professor*
 Margaret H. D. Smith, M.D., *Associate Professor*
 Selma E. Snyderman, A.B., M.D., *Associate Professor*
 Ruth M. Bakwin, A.B., A.M. (PSYCH.), M.D., *Associate Professor of Clinical Pediatrics*
 Sidney Q. Cohan, B.S., M.D., *Associate Professor of Clinical Pediatrics*
 Lillian A. Gilbert, A.B., M.D., *Associate Professor of Clinical Pediatrics*
 Harold Jacobziner, A.B., B.S., M.D., M.P.H., *Associate Professor of Clinical Pediatrics*
 Lillian Milgram, A.B., M.D., *Associate Professor of Clinical Pediatrics*
 Samuel Stone, B.S., M.D., *Associate Professor of Clinical Pediatrics*
 Blandina Worcester, A.B., M.D., *Associate Professor of Clinical Pediatrics*
 Theodore K. Brunner, DR.MED.VET. [ZURICH], *Assistant Professor*
 Estelle R. DeVito, A.B., M.D., *Assistant Professor*
 Andrew D. Hunt, Jr., B.S., M.D., *Assistant Professor*
 Richard N. Reuben, A.B., M.D., *Assistant Professor (assigned to Physical Medicine and Rehabilitation)*
 Harrison F. Wood, A.B., M.D., *Assistant Professor*
 Charlotte Marker Zitrin, A.B., M.D., *Assistant Professor*
 Katharine D. Brownell, A.B., M.D., M.P.H., *Assistant Professor of Clinical Pediatrics*
 Eugenie F. Doyle, B.S., M.D., *Assistant Professor of Clinical Pediatrics*
 Regina Gluck, A.B., M.D., *Assistant Professor of Clinical Pediatrics*
 Reuben Turner, A.B., M.D., *Assistant Professor of Clinical Pediatrics*
 Samuel D. Bell, A.B., M.D., *Clinical Professor*
 Alfred J. Vignec, B.S., M.D., *Clinical Professor*
 Harold H. Berman, A.B., M.D., *Associate Clinical Professor*
 Mortimer W. Weber, B.S., M.D., *Associate Clinical Professor*
 Alfred E. Fischer, A.B., M.D., *Assistant Clinical Professor*
 Frank B. Glasser, B.S., M.D., *Assistant Clinical Professor*
 Joseph Goldstein, M.D., *Assistant Clinical Professor*
 A. Milton Jacobs, B.S., DR.MED. [ROSTOCK], *Assistant Clinical Professor*
 Leo Jenkins, B.S., M.D., *Assistant Clinical Professor*
 Simon Kove, B.S., M.D., *Assistant Clinical Professor*
 Martin Lazar, B.S.; M.B., CH.B. [GLASGOW], *Assistant Clinical Professor*
 Neil F. Lebhar, A.B., M.D., *Assistant Clinical Professor*
 Shirley Stone, A.B., M.D., *Assistant Clinical Professor*
 Margaret Tenbrinck, A.B., M.S., M.D., *Assistant Clinical Professor*
 Stanley M. Wershof, A.B. [ALBERTA], M.D., C.M. [MCGILL], *Assistant Clinical Professor*

Frank Zuleger, M.D. [CHARLES, PRAGUE], *Assistant Clinical Professor*
 Amparo C. Adiao, M.D. [PHILIPPINES], *Instructor*
 Stuart J. Danoff, A.B., M.D., *Instructor*
 Sheldon Fox, A.B., M.D., *Instructor*
 Joan P. Giles, A.B., M.D., *Instructor*
 Fernand Hould, *Instructor*
 Kathryn G. Jacobs, A.B., M.D., *Instructor*
 Feng-Kai Lin, M.D. [NATIONAL MEDICAL, SHANGHAI], *Instructor*
 Enriqueta Melly, B.M.CIR. [SAN MARCOS], *Instructor*
 Soledad M. Morales, M.D. [PHILIPPINES], *Instructor*
 Emilia Sedlis, M.D. [ROME], *Instructor*
 Maarten S. Sibinga, M.D. [LEIDEN], *Instructor*
 Robert C. Barrett, B.S., M.D., *Clinical Instructor*
 Oree M. Carroll, A.B.; M.D. [GENEVA], *Clinical Instructor*
 Irving Claman, A.B., M.D., *Clinical Instructor*
 Albina A. Claps, A.B., M.D., *Clinical Instructor*
 Rouvoe Cushing, A.B., M.D., *Clinical Instructor*
 Rosemarie I. Haarburger Meldola, PHYSICIAN [HAMBURG], *Clinical Instructor*
 Eva V. Ebin, M.D. [VIENNA], *Clinical Instructor*
 Donald Hirsch, A.B., M.D., *Clinical Instructor*
 Josephine M. Kerr, A.B., M.D., *Clinical Instructor*
 Hans W. Kunz, M.D. [ZURICH], *Clinical Instructor*
 S. Robert Lewis, B.S., M.S.P.H., M.D., *Clinical Instructor*
 Julia K. Ling, A.B., M.D., *Clinical Instructor*
 Dabney Moon-Adams, A.B., A.M., M.D., *Clinical Instructor*
 Bernard A. Schmierer, B.S., M.D., *Clinical Instructor*
 Henri Temerson, M.D. [PARIS], *Clinical Instructor*
 Wanda Scala Walsh, A.B., M.D., *Clinical Instructor*
 Max Werner, *Clinical Instructor*
 Matilda B. Brust, A.B., M.D., *Assistant*
 Charlotte Grantz, A.B., M.D., *Assistant*
 Horace Lichter, *Assistant*
 Lois Lyons, *Assistant*
 Ralph Perry, *Assistant*
 Marianne Schwob, *Assistant*
 S. Zoe Walsh, M.D. [GENEVA], *Assistant*
 Carol C. Dickson, A.B., M.D., *Clinical Assistant*
 John D. Gorvoy, A.B., M.D. [TORONTO], *Clinical Assistant*
 Thea Stepler, M.D. [VIENNA], *Clinical Assistant*

THIRD YEAR

Clinical Clerkships—Each student spends eight weeks as clinical clerk on the wards of the Children's Medical Service at Bellevue Hospital.

Clinical Lecture—Once a week throughout the year. Professor Holt and staff.

Contagious Diseases at Willard Parker Hospital—Each student has six exercises in which he is shown examples of the various contagious diseases.

FOURTH YEAR

Each student spends four weeks in the afternoon in the Outpatient Department of the Children's Medical Service.

Clinical Lecture—Once a week throughout the year. Professor Holt and staff.

ELECTIVES

Elective work is available by arrangement with the Associate Dean and the departmental chairman.

PHARMACOLOGY

Richard C. de Bodo, M.D. [BUDAPEST], *Professor*
 Otto Loewi, M.D. [STRASBOURG], SC.D. (HON.), *Research Professor*
 Elijah Adams, A.B., M.D., *Associate Professor*
 Norman Altszuler, B.S., M.S., PH.D., *Instructor*
 Arnold S. Dunn, B.S., PH.D., *Instructor*

SECOND YEAR

First Trimester

Lectures—Four hours a week. The principles underlying the actions and the therapeutic applications of drugs, and the actions of toxic agents, are discussed. Special attention is given to the relation between chemical structure and pharmacological action and the biochemical basis of such action.

Laboratory—One six-hour session each week. The actions of drugs are illustrated by human, animal, and in vitro experiments performed by the students working in small groups. The experiments include the use of classical pharmacological techniques as well as more recent ones concerned especially with the use of chemotherapeutic agents. The laboratory course is occasionally supplemented with special demonstrations.

Conferences—One hour a week for group discussion of lectures and laboratory material and selections from the pharmacological literature.

ELECTIVES

Elective work is available by arrangement with the Associate Dean and the departmental chairman.

PHYSICAL MEDICINE AND REHABILITATION

Howard A. Rusk, A.B., M.D., SC.D. (HON.), LL.D., *Howard A. Rusk Professor and Chairman of the Department*
 George G. Deaver, B.P.E., M.D., *Professor of Clinical Physical Medicine and Rehabilitation*
 Donald A. Covalt, B.S., M.D., *Associate Professor of Physical Medicine and Rehabilitation*
 Joseph G. Benton, A.B., M.S., PH.D., M.D., *Associate Professor of Clinical Physical Medicine and Rehabilitation*
 Michael Dacso, M.D. [BUDAPEST], *Associate Professor of Clinical Physical Medicine and Rehabilitation*
 Constantine L. Jeannopoulos, A.B.; M.D. [ROME], *Associate Professor of Clinical Orthopedic Surgery (Physical Medicine and Rehabilitation)*
 Edward W. Lowman, B.S., M.S. (MED.), M.D., *Associate Professor of Clinical Physical Medicine and Rehabilitation*
 Allen S. Russek, A.B.; L.R.C.P.S. [EDINBURGH, GLASGOW], *Associate Professor of Clinical Physical Medicine and Rehabilitation*
 A. Bernice Clark, A.B., M.D., *Assistant Professor*
 Daniel J. Feldman, A.B., M.D., *Assistant Professor*
 Pablo A. Morales, M.D. [PHILIPPINES], *Assistant Professor of Urology (assigned to Physical Medicine and Rehabilitation)*
 Richard N. Reuben, A.B., M.D., *Assistant Professor of Pediatrics (assigned to Physical Medicine and Rehabilitation)*
 Philip R. Lee, A.B., M.D., M.S. (MED.), *Assistant Professor of Clinical Physical Medicine and Rehabilitation*
 Martin E. McCavitt, B.S., ED.M., ED.D., *Assistant Professor of Clinical Physical Medicine and Rehabilitation*
 Eugene J. Taylor, B.S. (EDUC.), A.M., LL.D., *Assistant Professor of Clinical Physical Medicine and Rehabilitation*
 Morton Marks, A.B., M.D., *Adjunct Assistant Professor of Clinical Neurology (assigned to Physical Medicine and Rehabilitation)*
 Samuel E. Bilik, M.D., *Associate Clinical Professor*
 Hans Kraus, M.D. [VIENNA], *Associate Clinical Professor*
 Harold Brandaleone, B.S., M.D., MED.SC.D., *Assistant Clinical Professor of Medicine (assigned to Physical Medicine and Rehabilitation)*
 Stanley H. Berns, B.S., M.D., *Assistant Clinical Professor*
 Gerald J. Friedman, B.S., M.D., *Assistant Clinical Professor*
 Joseph Goodgold, A.B., M.D., *Assistant Clinical Professor*
 Bruce B. Grynbaum, M.D., *Assistant Clinical Professor*
 Edith L. Kristeller, M.D., *Assistant Clinical Professor*
 Kenneth S. Landauer, A.B., M.D., *Assistant Clinical Professor*
 Ambrose P. Merrill, Jr., A.B., M.H.A., M.D., *Assistant Clinical Professor*
 Eugene Moskowitz, B.S.; M.D. [BASEL], *Assistant Clinical Professor*
 Samuel S. Sverdlik, B.S., M.D., *Assistant Clinical Professor*
 Cynthia Deutch, A.B., PH.D., *Instructor*
 Leonard Diller, B.S., A.M., PH.D., *Instructor*
 Leon Greenspan, A.B., M.D., *Instructor*
 Jacob Graham, B.S., M.D., *Instructor*

Albert Haas, M.D. [BUDAPEST], *Instructor*
 Joseph Novey, A.B., M.S.W., *Instructor*
 Mitzi Suskind, A.B., M.S., PH.D., *Instructor*
 William Tosberg, *Instructor*
 Henry Viscardi, Jr., B.S., LL.B., LL.D., *Instructor*
 Augusta Alba, *Clinical Instructor*
 Leo Dobrin, A.B. (PSYCH.), M.D., *Clinical Instructor*
 Irving M. Friedman, A.B., LL.B., M.S.P.H., *Clinical Instructor*
 Reuben Leass, B.S., M.D., *Clinical Instructor*
 Herbert F. Mulholland, B.S., M.D., *Clinical Instructor*
 John J. O'Connor, Jr., M.D., *Clinical Instructor in Urology (Physical Medicine and Rehabilitation)*
 Roy T. Shults, A.B., M.D., *Clinical Instructor in Otorhinolaryngology (Physical Medicine and Rehabilitation)*
 David Siegel, M.D., *Clinical Instructor*
 Jack Sokolow, B.S.; M.D. [GENEVA], *Clinical Instructor*
 John Untereker, B.S. (PHYS. EDUC.), B.S. (PHYS. THERAPY), M.D., *Clinical Instructor*
 Zofia K. Laszewski, M.B., CH.B. [ABERDEEN], *Assistant*
 James McKeown, A.B., *Assistant*
 Klaas Smidt, M.D. [LEIDEN], *Assistant*
 Ian E. Alger, M.D. [TORONTO], *Clinical Assistant in Psychiatry*
 Eugene Kerr, B.S., M.D., *Clinical Assistant in Psychiatry (assigned to Physical Medicine and Rehabilitation)*

Undergraduate Teaching

FIRST YEAR

Six hours of teaching of functional anatomy and clinical kinesiology co-ordinated with the study of upper and lower extremities in the Department of Anatomy.

Correlation clinics on functional anatomy and clinical implications of the structures of lower and upper extremities.

SECOND YEAR

Lectures on the historical and physical data of the disabled and chronically ill patient with emphasis on disease evaluation, gait analysis, muscle and joint function, and activities of daily living.

Six hours of practical ward teaching in the examination and evaluation of the disabled patient.

THIRD YEAR

Rehabilitation teaching rounds are made weekly on the medical and surgical wards at Bellevue Hospital with the students assigned to those wards. Emphasis is placed on rehabilitation problems encountered on a medical and surgical service.

FOURTH YEAR

Eleven clinics in rehabilitation are held during the fourth year. Subjects discussed and demonstrated cover the management of the special problems of the disabled and chronically ill and the relationship of physical medicine and rehabilitation to other fields of medicine. There is participation in the teaching problems of the Departments of Public Health and Preventive Medicine relative to the problems of chronic disease and disability.

ELECTIVES

Elective work is offered in the department by arrangement with the Associate Dean and departmental chairman. Such electives may be taken in the broad field of rehabilitation or in areas of special interest.

PHYSIOLOGY

Homer W. Smith, A.B., SC.D., M.S. (HON.), *Professor and Chairman of the Department*

Morris Rockstein, A.B., A.M., PH.D., *Associate Professor*

Herbert Gershberg, B.S., M.S., M.D., *Assistant Professor of Medicine (assigned to Physiology)*

Norman Deane, A.B., M.D., *Lecturer*

John W. Bauman, Jr., A.B., PH.D., *Instructor*

John S. Cook, A.B., A.M., PH.D., *Instructor*

Robert A. Wolbach, A.B., PH.D., *Instructor*

FIRST YEAR

Second Trimester

Muscle and Nerve—Methods of stimulating and observing the responses; threshold and changes in irritability; contraction of skeletal muscle showing time relations of the activity, summation, fatigue, and the working power in contraction; speed and efficiency in man; the oxygen debt; electromotive phenomena; spinal reflexes.

Circulation—Properties of heart muscle, events of the cardiac cycle, regulation of blood pressure, the measurement of blood pressure in man, the effect of exercise and other factors on the circulation, the action of the autonomic nervous system.

Respiration—Determination of oxygen and carbon dioxide in expired air, effects of oxygen lack and carbon dioxide excess on respiration, the chemical and nervous control of respiration, mechanics of respiration, the transport of gases by the blood.

Kidney Function—Methods and principles of renal physiology, electrolyte balance, water balance, acid-base balance.

Metabolism—Determination of the respiratory quotient, measurement of basal metabolism, effect of diet and exercise on metabolism, carbohydrate metabolism and regulation of blood-sugar level.

SECOND YEAR

First Trimester

Physiology of the nervous system and sense organs is given with the anatomy of the nervous system in the Department of Anatomy.

ELECTIVES

Elective work is available by arrangement with the Associate Dean and departmental chairman.

PREVENTIVE MEDICINE

Harry Most, B.S., M.D., MED.SC.D., *Hermann M. Biggs Professor and Chairman of the Department*

William T. Ingram, A.B. (CIV.ENG.), M.P.H., *Adjunct Professor of Civil Engineering (Environmental Sanitation)*

Anthony A. Bianco, B.S., M.D., *Associate Professor of Clinical Medicine (assigned to Preventive Medicine)*

Nathan Entner, A.B., A.M., PH.D., *Assistant Professor*

Frances T. Poe, A.B., A.M., M.S., *Assistant Professor*

Meir Yoeli, M.S. [KAUNAS], M.D. [BASEL], *Assistant Professor (Parasitology)*

Theodore Rosenthal, B.S., M.D., *Clinical Professor (Public Health Administration)*

Arthur B. Robins, A.B., M.D., MED.SC.D., D.P.H., *Associate Clinical Professor (Tuberculosis)*

Joseph H. Merin, B.S., M.D., *Assistant Clinical Professor of Psychiatry (Social Medicine)*

Clifford L. Spingarn, A.B., M.D., *Assistant Clinical Professor (Parasitology)*

Vernon A. Ayer, B.S., M.D., M.S.P.H., *Lecturer*

Morris Brand, A.B., M.D., *Lecturer*

Freida F. Frei, B.S., M.S.S., R.N., *Lecturer (Social Service)*

Jacques May, M.D. [PARIS], *Lecturer (Geographical Medicine)*

Arthur Schindelheim, D.D.S., M.P.H., *Lecturer (Dental Hygiene)*

Abraham Stone, B.S., M.D., *Lecturer (Population Control)*

I. Jackson Tartakow, A.B., M.D., M.P.H., *Lecturer (Epidemiology)*

Louis Weiner, E.E., *Lecturer (Vital Statistics)*

Irving H. Witlin, B.S., LL.B., J.S.D., *Lecturer (Environmental Sanitation)*

Nelda E. Alger, B.S., M.S. (ZOOLOGY), *Assistant*

SECOND YEAR

Epidemiology—One hour a week in the second trimester (11 hours). Lectures on the epidemiology of communicable and other diseases and disabilities in conjunction with the course in microbiology. Consideration is given to the principles of epidemiology to specific diseases illustrating various routes, sources, and reservoirs of infection and to general methods of control and epidemiological investigation.

Parasitic Diseases—Five hours a week in the second trimester (55 hours). Lectures and laboratory exercises on the protozoan and helminthic diseases of man, and the arthropod vectors and agents of human diseases. The morphology of parasites and vectors is dealt with from the point of view of identification. In order to present a complete picture of each disease, emphasis is placed upon life cycles, epidemiology, pathology, clinical symptoms, treatment, and prevention.

THIRD YEAR

Industrial Medicine—Given by the Department of Industrial Medicine of the Post-Graduate Medical School. Seven hours devoted to the etiological, epidemiological, clinical, and preventive aspects of occupational diseases, and to the physical, emotional, and environmental aspects of industrial health.

FOURTH YEAR

Clerkships in Preventive Medicine and Public Health—Sections of about fifteen students spend eight weeks (84 hours) in the Health and Teaching Center of the Lower East Side District of the New York City Health Department, in which the Department of Preventive Medicine is located. Instruction consists of seminars, field visits, medical-social studies of families, and special readings. The subjects covered include local health administration, public health nursing, dental hygiene, diagnosis and control of tuberculosis and syphilis, medical-social service, environmental sanitation, industrial hazards, and planned parenthood. Emphasis is placed on the practice of preventive medicine by a physician and his co-operation with public health agencies.

Medical Practice—One hour a week (15 hours). Informal discussions on public health organizations, chronic disease control, medical ethics, private practice, group practice, hospital and health insurance, employer's liability. The discussions are planned to present objectively the diverse points of view on medical practice and medical economics.

Social and Community Health—Seminars (20 hours) covering problems of social and community health significance such as alcoholism, drug addiction, care of the aged, etc.

ELECTIVES

Electives for second-, third-, and fourth-year students, giving credit for 100 or 200 hours, may be arranged for individuals or small groups. They consist of practical work or participation in research on medical statistics, parasitology, tropical medicine, child hygiene, epidemiology, tuberculosis, industrial hygiene, or other subjects. Some of these elective courses are conducted with the co-operation of the New York City Department of Health. A program for each elective student is made by consultation with the head of the department. Electives in the tropics are available.

Junior Public Health Internship—The New York State Department of Health offers opportunities for second- and third-year students to gain practical experience in public health during the summer vacation. Stipends are granted covering living expenses and travel.

PSYCHIATRY AND NEUROLOGY

Psychiatry

S. Bernard Wortis, A.B., M.D., *Lucius N. Littauer Professor and Chairman of the Department*

Morris Herman, B.S., M.D., *Professor of Psychiatry*

Lauretta Bender, B.S., A.M., M.D., *Professor of Clinical Psychiatry*

Marvin Stern, B.S., M.D., *Associate Professor*

Hans L. Teuber, Ph.D., *Associate Professor of Experimental Psychology*

John Frosch, B.S.; M.D. [BERN], *Associate Professor of Clinical Psychiatry*

Florence C. Halpern, A.B., A.M., Ph.D., *Associate Professor of Clinical Psychology*

Lewis I. Sharp, B.S., M.D., C.M. [MCGILL], *Associate Professor of Clinical Psychiatry*

Alexander Thomas, B.S., M.D., *Assistant Professor*

Arthur Zitrin, B.S., M.S., M.D., *Assistant Professor*

Saul H. Fisher, B.S., M.D., *Assistant Professor of Clinical Psychiatry*

Benjamin Apfelberg, M.D., *Clinical Professor*

Louis Hausman, A.B., M.D., *Clinical Professor of Neuropsychiatry*

Philip R. Lehrman, M.D., *Clinical Professor*

John H. Taterka, M.D. [BRESLAU], *Clinical Professor*

Harvey J. Tompkins, B.S., M.D., *Clinical Professor*

David Wechsler, A.B., A.M., Ph.D., *Clinical Professor of Clinical Psychology*

David J. Impastato, A.B., M.D., *Associate Clinical Professor*

Sidney Klein, B.S., M.D., *Associate Clinical Professor*

Arnold Z. Pfeffer, B.S., M.S., M.D., *Associate Clinical Professor*

Daniel Goldstein, B.S., M.D., *Assistant Clinical Professor*

Alfred Lilienfeld, B.S., M.D., *Assistant Clinical Professor*

Bernard Locke, B.S., Ph.D., *Assistant Clinical Professor of Clinical Psychology*

Meyer Maskin, A.B., M.B., M.D., *Assistant Clinical Professor*

Joseph Merin, B.S., M.D., *Assistant Clinical Professor*

Leo L. Orenstein, B.S., M.D., *Assistant Clinical Professor*

Lilly Ottenheimer, M.D. [WÜRZBURG], *Assistant Clinical Professor*

Robert E. Peck, A.B., M.D., *Assistant Clinical Professor*

Earl Saxe, B.S., M.D., *Assistant Clinical Professor*

Dora Schaffer, M.D. [BERLIN], *Assistant Clinical Professor*

William Schick, M.D., *Assistant Clinical Professor*

Archie Silver, B.S., M.D., *Assistant Clinical Professor*

Helen Thompson, A.B., A.M., Ph.D., *Assistant Clinical Professor of Clinical Psychology*

David E. Silberman, B.S., A.M., M.D., *Instructor*

Emanuel E. Fisher, *Instructor in Clinical Psychology*

A. Leonard Abrams, A.B., M.D., *Clinical Instructor*

Marianne Beran, Ph.D. [VIENNA], *Clinical Instructor in Clinical Psychology*

Seymour Berg, A.B., M.D., *Clinical Instructor*

Albert Bryt, Doc. Univ. [MED. FAC., PARIS], *Clinical Instructor*

Aaron H. Esman, A.B., M.D., *Clinical Instructor*

Arnold J. Friedhoff, M.D., *Clinical Instructor*

David B. Friedman, A.B., M.D., *Clinical Instructor*

Robert Gans, A.B., M.D., *Clinical Instructor*

Esther Greenbaum, DOC. EN MED. [PARIS], *Clinical Instructor*
 Milton H. Horowitz, M.D., *Clinical Instructor*
 Edward J. Komora, A.B., M.D., *Clinical Instructor*
 Malvina Kremer, A.B., A.M., M.D., *Clinical Instructor*
 Joseph Levi, B.S., A.M., PH.D., *Clinical Instructor in Clinical Psychology*
 Morris S. Parmet, B.S., M.D., *Clinical Instructor*
 Alfred Rifkin, B.S., M.D., *Clinical Instructor*
 Salo Rosenbaum, A.B., M.D., *Clinical Instructor*
 Selig J. Ross, B.S., M.D., *Clinical Instructor*
 Rubin L. Siegel, B.S.; L.R.C.P.S. [EDINBURGH, GLASGOW], *Clinical Instructor*
 Jerome S. Silverman, A.B., M.D., *Clinical Instructor*
 Kona Simon, B.S.; M.D. [VIENNA], *Clinical Instructor*
 Harry Tashman, M.D., *Clinical Instructor*
 James Toolan, A.B., M.D., *Clinical Instructor*
 Montague Ullman, B.S., M.D., *Clinical Instructor*
 George J. Weinstein, M.D., *Clinical Instructor*
 Theodore Weiss, M.D., *Clinical Instructor*
 Edith Wladowsky, B.S., *Clinical Instructor in Clinical Psychology*
 Patricia Gershwin, A.B., M.S.S., *Assistant in Psychiatric Social Work*
 Ian E. Alger, M.D. [TORONTO], *Clinical Assistant*
 Helene E. Aronson, DOC. EN MED. [PARIS], *Clinical Assistant*
 Alexander Caemmerer, Jr., A.B., M.D., *Clinical Assistant*
 Thomas Wood Carr, B.S., M.D., *Clinical Assistant*
 Marvin Chapman, A.B., A.M., *Clinical Assistant in Clinical Psychology*
 Adrien Coblenz, M.D., *Clinical Assistant*
 Paul Dince, M.D., *Clinical Assistant*
 Abraham S. Efron, A.B.; M.B. [QUEEN'S, BELFAST], *Clinical Assistant*
 Lee Falk, B.S., M.D., *Clinical Assistant*
 Charlotte Feibel, *Clinical Assistant in Clinical Psychology*
 Vivian Fromberg, A.B., M.D., *Clinical Assistant*
 Noel Galen, A.B., M.D., *Clinical Assistant*
 Benjamin Gershwin, B.S., M.D., *Clinical Assistant*
 Edward Holtzman, A.B., M.D., *Clinical Assistant*
 Louis Hott, M.D. [BERN], *Clinical Assistant*
 Eugene Kerr, B.S., M.D., *Clinical Assistant*
 Harry Kosovsky, A.B., M.D., *Clinical Assistant*
 Sol Nichtern, A.B., M.B., M.D., *Clinical Assistant*
 George Nicklin, A.B., M.D., *Clinical Assistant*
 Kenneth H. Raizen, M.D., *Clinical Assistant*
 Alexandra Symonds, A.B., A.M., M.D., *Clinical Assistant*
 Martin Symonds, A.B., M.D., *Clinical Assistant*
 Leon Tec, M.D. [ST. JOSEPH, BEIRUT], *Clinical Assistant*
 Harold Trigg, B.S., M.D., *Clinical Assistant*
 Margaret O. Tsaltas, A.B., M.D., *Clinical Assistant*

Neurology

S. Bernard Wortis, A.B., M.D., *Professor and Chairman of the Department*
 Samuel Brock, M.D., *Professor of Neurology*
 Morris B. Bender, B.S., M.D., *Professor of Clinical Neurology*

Morton Nathanson, A.B., M.D., *Assistant Professor of Neurology*
 Alvin L. Robins, A.B., M.D., *Assistant Professor of Neurology*
 Philip S. Bergman, A.B., M.D., *Assistant Professor of Clinical Neurology*
 Arthur Schappell, A.B. (CHEM.), M.D., *Assistant Professor of Clinical Neurology*
 Morton Marks, A.B., M.D., *Adjunct Assistant Professor of Clinical Neurology*
 (assigned to *Physical Medicine and Rehabilitation*)
 Alexandra Adler, M.D. [VIENNA], *Associate Clinical Professor*
 David J. Flicker, B.S., M.D., *Associate Clinical Professor*
 Israel S. Freiman, B.S., M.D., *Associate Clinical Professor*
 Ira S. Ross, A.B., M.D., *Assistant Clinical Professor*
 Ernest V. Altman, *Clinical Instructor*
 Francis C. Ansanelli, B.S., M.D., *Clinical Instructor*
 George S. Cattanaach, A.B., M.D., *Clinical Instructor*
 Lawrence Kaplan, A.B., M.D., *Clinical Instructor*
 Joachim Luwisch, M.D. [ERLANGEN], *Clinical Instructor*
 Elias Savitsky, B.S., M.D., *Clinical Instructor*
 Paul J. Anderson, *Clinical Assistant*
 Daniel Solomon Feldman, A.B., M.D., *Clinical Assistant*
 Gustave Gordon, M.D. [BERN], *Clinical Assistant*
 Robert Jaffe, M.D., *Clinical Assistant*
 DeSaussure F. Philpot, A.B., M.D., *Clinical Assistant*
 Walter Sencer, B.S., M.D., *Clinical Assistant*
 Stefan Shanzer, M.D. [BOLOGNA], *Clinical Assistant*

Psychiatry

Psychiatric instruction extends throughout each of the four years of the medical curriculum. In addition to the regular time devoted to psychiatry, there are combined interdepartmental teaching exercises with the Departments of Anatomy, Physiology, Medicine, Neurology, Pediatrics, Physical Medicine and Rehabilitation, and Preventive Medicine.

FIRST YEAR

Introductory Psychiatry—Psychodynamics. Lectures and clinical demonstrations emphasizing the factors concerned in the development of normal behavior.

SECOND YEAR

Introductory Psychiatry—Psychopathology. Lectures and clinical demonstrations illustrating the dynamics of psychopathological reactions.

THIRD YEAR

Clinical Psychiatry—Clinical clerkship, lectures, and clinical demonstrations of the various psychiatric syndromes. Also bedside, outpatient department, and seminar instruction in methods of interview, examination, and study.

FOURTH YEAR

Clinical Psychiatry—Lectures, clinical demonstrations, and clinical clerkships on the wards and outpatient service of the Psychiatric Division of Bellevue Hospital and the University Clinic. Instruction in clinical psychiatry, psychosomatic medicine, psychotherapy, and medicolegal aspects of psychiatry.

ELECTIVES

Electives for third- and fourth-year students for one-month periods may be arranged for individuals or groups of students. These elective periods may include work in general clinical psychiatry, psychosomatics, psychiatric problems of children and adolescents, psychometric methods, psychotherapy, and other psychiatric treatment methods and experimental psychiatry. A program for each elective student is made by consultation with the Associate Dean and the departmental chairman.

Neurology

SECOND YEAR

Introduction to Clinical Neurology—Lectures in neurophysiology and clinical demonstrations; training in the discipline of neurologic examination.

THIRD YEAR

Clinical Neurology—Clinical lectures and clerkship with bedside instruction.

FOURTH YEAR

Clinical Neurology—Further ward and clinic instruction.

ELECTIVES

Electives for third- and fourth-year students for one-month periods may be arranged for individuals or groups of students. These elective periods may include work in clinical or experimental neurology (or, through the co-operation of the Department of Neurosurgery, in the latter field). A program for each elective student is made by consultation with the Associate Dean and the departmental chairman.

RADIOLOGY

- Maxwell H. Poppel, M.D., *Professor and Chairman of the Department*
 Sidney Rubenfeld, B.S., M.D., *Professor of Clinical Radiology (Radiation Therapy)*
 Henry K. Taylor, M.D., *Professor of Clinical Radiology*
 Milton Friedman, M.D., *Associate Professor of Clinical Radiology*
 Harold G. Jacobson, B.S., M.B., M.D., *Clinical Professor of Radiology*
 George P. Robb, A.B., M.D., *Clinical Professor of Radiology*
 Francis F. Ruzicka, Jr., A.B., M.D., *Clinical Professor of Radiology*
 Samuel S. Wald, D.D.S., *Clinical Professor of Radiology*
 Samuel L. Beranbaum, A.B., M.D. [TORONTO], *Associate Clinical Professor of Radiology*
 Francis H. Ghiselin, A.B., M.D., *Associate Clinical Professor of Radiology*
 Lewis R. Lawrence, A.B.; M.D. [LAUSANNE], *Associate Clinical Professor of Radiology*
 Rieva Rosh, PHYSICIAN [KHARKOV], *Associate Clinical Professor of Radiology (Radiation Therapy)*
 Raymond M. Abrams, A.B., M.S., M.D., *Assistant Clinical Professor of Radiology*
 Alexander J. Chilko, M.D. [BUDAPEST], *Assistant Clinical Professor*
 Benjamin B. Cohen, A.B., A.M., M.D., *Assistant Clinical Professor*
 Stanley H. Craig, B.S.; M.D. [BASEL], *Assistant Clinical Professor*
 Stephen B. Dewing, A.B., M.D., *Assistant Clinical Professor*
 Benjamin L. Feuerstein, B.S., M.D., *Assistant Clinical Professor (Radiation Therapy)*
 Robert J. Gross, B.S.; M.D. [ZURICH], *Assistant Clinical Professor*
 Bernard Kurz, M.D., *Assistant Clinical Professor*
 Frederick H. McKee, A.B., M.D., *Assistant Clinical Professor (Radiation Therapy)*
 Bernard Roswit, A.B., M.D., *Assistant Clinical Professor (Radiation Therapy)*
 Irving Schwartz, B.S., M.D., *Assistant Clinical Professor*
 Joseph Sorrentino, B.S., M.D., *Assistant Clinical Professor*
 Jesse D. Stark, A.B., M.D., *Assistant Clinical Professor*
 Joseph Stein, M.D., *Assistant Clinical Professor*
 Harry Weaver, A.B., M.D., *Assistant Clinical Professor*
 Arthur Weinberg, B.S., M.D., *Assistant Clinical Professor*
 Costantino Zaino, B.S., M.D., *Assistant Clinical Professor*
 Edgar N. Grisewood, A.B., A.M., *Lecturer (X-ray Physics)*
 S. Steven Brodie, B.S., M.S., PH.D., *Instructor in Radiological Physics*
 Jules Bromberg, A.B., M.B., M.D., *Instructor in Radiology (Radiation Therapy)*
 Robert O. Christman, A.B. (SCI.), M.B., M.D., *Instructor in Radiology*
 Nicholas G. Demy, B.S., M.D., *Instructor in Radiology (Radiation Therapy)*
 Samuel T. Herstone, A.B., M.D., *Instructor*
 Gustave Kaplan, B.S., M.D., *Instructor in Radiology (Radiation Therapy)*
 Max Miller, B.S.; M.D. [VIENNA], MED.SC.M., *Instructor*
 Alexander Pearlman, A.B., M.D., *Instructor*
 Arthur Post, M.D. [BERN], *Instructor in Radiology (Radiation Therapy)*
 Evelyn S. Slobodiansky, A.B., M.S., PH.D., *Instructor*
 Joseph Zausner, B.S.; M.D. [VIENNA], *Instructor*

Alan R. Bleich, A.B., *Instructor in Clinical Radiology*
 Emmanuel Dickler, B.S.; M.D. [BEIRUT], *Clinical Instructor*
 Abraham Geffen, A.B., M.D., *Clinical Instructor*
 Richard H. Hamilton, M.D., *Clinical Instructor*
 C. Bertrand Rossignol, A.B., M.D., *Clinical Instructor (Radiation Therapy)*
 Arnold M. Wald, M.D., *Clinical Instructor*
 Stanley Dannenberg, A.B., M.D., *Clinical Assistant (Radiation Therapy)*
 Milan Duray, B.S., M.D., *Clinical Assistant*
 Elliott Fishbein, B.S., M.S., M.D., *Clinical Assistant (Radiation Therapy)*
 Milton M. Grover, Jr., A.B., M.D., *Clinical Assistant (Radiation Therapy)*
 Walter Lentino, M.D., *Clinical Assistant*
 Anthony A. Maglione, M.D. [NAPLES], M.D., M.S. (RADIOLOGY), *Clinical Assistant (Radiation Therapy)*
 Alex Norman, A.B., M.D., *Clinical Assistant (Radiation Therapy)*
 Jerome H. Shapiro, M.D., *Clinical Assistant*
 Frederick P. Woodruff, A.B., M.D., *Clinical Assistant*
 Bertram E. Zeitel, M.D., *Clinical Assistant*

FIRST YEAR

Instruction in radiological anatomy is given in conjunction with the Department of Anatomy. This includes fluoroscopy of the thoracic organs as well as X-ray studies of the skeletal structures.

SECOND YEAR

Lectures and patient demonstrations in the special techniques of examination of the patient as related to radiology are offered during the third trimester of the second year.

THIRD YEAR

Individual bedside instruction is provided during the clerkships in the various clinical specialties.

FOURTH YEAR

Small groups throughout the year attend an X-ray conference one hour weekly for a period of two months.

ELECTIVES

Elective work is available by arrangement with the Associate Dean and the departmental chairman.

SURGERY

John H. Mulholland, A.B., M.D., *George David Stewart Professor and Chairman of the Department*
 William F. MacFee, A.B., M.D., *Professor of Clinical Surgery*
 Louis M. Rousselot, A.B., M.D., M.S. (SURGERY), M.D., M.S. (SURGERY), *Professor of Clinical Surgery*
 Henry Doubilet, A.B., M.S., M.D., C.M. [MCGILL], *Associate Professor*
 W. Ross McCarty, M.D., C.M. [QUEEN'S, KINGSTON], *Associate Professor*
 Irwin E. Siris, M.D., *Associate Professor*
 Mario Gaudino, Ph.D.; M.D. [BUENOS AIRES], *Adjunct Associate Professor of Surgery (Biochemistry)*
 Anthony S. Bogatko, M.D., *Associate Professor of Clinical Surgery*
 John M. Converse, M.D. [PARIS], *Associate Professor of Clinical Surgery (Plastic Surgery)*
 Jesse W. Mahoney, A.B., M.D., *Associate Professor of Clinical Surgery*
 Daniel A. Mulvihill, A.B., M.D., *Associate Professor of Clinical Surgery*
 Wallace B. Murphy, B.S., M.D., M.D., M.S. (SURGERY), *Associate Professor of Clinical Surgery*
 Benjamin G. P. Shafiroff, M.D., *Associate Professor of Clinical Surgery (assigned to Anatomy)*
 Samuel Standard, M.D., *Associate Professor of Clinical Surgery*
 Ernest Breed, M.D., *Assistant Professor*
 Harold H. Sage, B.S., M.D., *Assistant Professor*
 Carl Smith, B.S., M.D., M.S. (BIOCHEM.), *Assistant Professor*
 Edgar H. Bates, A.B., M.D., *Assistant Professor of Clinical Surgery*
 Victor Carabba, D.V.S., M.D., *Assistant Professor of Clinical Surgery*
 Thomas J. Galvin, M.D., *Assistant Professor of Clinical Surgery*
 Meyer J. Kutisker, M.D., *Assistant Professor of Clinical Surgery*
 John A. Lawler, Jr., B.S., M.D., *Assistant Professor of Clinical Surgery*
 Francis M. Donehue, B.S., M.D., *Clinical Professor*
 Leon Ginzburg, M.D., *Clinical Professor*
 Abram J. Abeloff, A.B., M.D., *Associate Clinical Professor*
 Gerald H. Pratt, M.D., *Associate Clinical Professor*
 Ross M. Campbell, M.D. [TORONTO], *Assistant Clinical Professor of Surgery (Plastic Surgery)*
 Max P. Cowett, M.D., *Assistant Clinical Professor*
 William I. Wolff, B.S., M.D., *Assistant Clinical Professor*
 Howard C. Baron, M.D., *Instructor*
 Jameson L. Chassin, B.S., M.D., *Instructor*
 Allan E. Dumont, A.B., M.D., *Instructor*
 James J. Finnerty, A.B., M.D., *Instructor*
 Seelig Freund, B.S., M.D., *Instructor*
 Benjamin Gaston, A.B., M.D., *Instructor (on military leave)*
 William Mackler, A.B., M.D., *Instructor*
 Hugh Z. Maray, A.B., M.D., *Instructor*
 George Reed, D.V.M., M.D., *Instructor*
 Blair O. Rogers, A.B., M.D., *Instructor in Surgery (Plastic Surgery)*
 Sylvan M. Stillman, B.S., M.D., *Instructor*
 Griswold P. Nammack, M.D., *Instructor in Clinical Surgery*
 Joseph L. Pfeifer, Jr., *Instructor in Clinical Surgery*

Clyde N. Baker, B.S., M.D., *Clinical Instructor*
 James F. Connell, Jr., A.B., M.D., *Clinical Instructor*
 James F. Dickson, III, A.B., M.D., *Clinical Instructor*
 James R. Donaldson, B.S., M.D., *Clinical Instructor*
 Gustave A. Haggstrom, A.B., M.D., *Clinical Instructor*
 George O. Halsted, A.B., M.D., *Clinical Instructor*
 George Harer, B.S., M.D., *Clinical Instructor*
 C. Buchman Katzenbach, A.B., M.D., *Clinical Instructor*
 Francis Z. Reinus, A.B., M.D., *Clinical Instructor*
 Francis X. Reynolds, A.B., M.D., *Clinical Instructor*
 Rafael M. Sanches-Uveda, A.B., M.D., *Clinical Instructor*
 David H. Saxe, A.B., M.D., *Clinical Instructor (Proctology)*
 Emanuel O. Silver, B.S., M.D., *Clinical Instructor*
 Seth F. Abramson, A.B., M.D., *Assistant*
 John G. Atkinson, A.B., M.D., *Assistant*
 Louis DelGuercio, B.S., M.D., *Assistant*
 Josef Jahr, B.S., M.D., *Assistant*
 Dominic J. Pastorelle, M.D., *Assistant*
 Sanford Savin, B.S., M.D., *Assistant in Surgery (Proctology)*

SECOND YEAR

Lectures—One a week during the third trimester, introductory, on the history of surgery, surgical training, and surgical principles of trauma. Professor Mulholland and Associate Professor Mahoney.

THIRD YEAR

Lecture Demonstrations—One a week throughout the year. Discussion and demonstration of surgical diseases in patients. Professor Mulholland and staff.

Ward Clerkship—Given throughout the calendar year. Sections of the class are assigned to the general and traumatic wards of the Third Surgical Division, Bellevue Hospital, for a three-month period, full time. For instructional purposes clerks are made a responsible part of the team that provides surgical care for the patients. Under the supervision of the resident and attending staff, histories, physical examinations, laboratory work, and necessary diagnostic procedures are either performed or observed by the clerks. Each is assigned, in rotation, patients as they are admitted to the hospital. Students attend ward rounds and staff conferences to discuss the diagnosis, treatment, and course of their patients. In addition, small groups hold daily conferences with instructors at which time the principles of surgery are discussed. For these conferences articles in current surgical literature are assigned for review, and reports on special subjects are prepared and delivered by the students. Once weekly a general seminar is conducted by the entire section with several instructors leading the discussion.

Students are expected to accompany their patients to consultations for special X-ray or other examinations and to the operating room. They are required to observe the preanesthetic preparation, the induction of anesthesia, and the postanesthetic period. Clerks are assigned for certain evenings and week ends during the surgical period to cover emergency admissions.

FOURTH YEAR

Lecture Demonstrations—One a week throughout the year, with presentation and discussion of surgical patients.

Students are assigned for a four-week period full time to service on the surgical wards of St. Vincent's Hospital, University Hospital, or the Manhattan Veterans Administration Hospital. This instruction period is designed as an advanced clerkship or student internship. Students are supervised by faculty on the resident and attending staffs of these hospitals, and certain responsibilities in the management of patients with surgical diseases are accorded students. Under some circumstances the responsibilities and duties are those ordinarily assigned to interns.

There are opportunities for selected students to work with members of the faculty on investigative clinical or laboratory problems during the surgical period.

Professors Mulholland (University Hospital), Rousselot (St. Vincent's Hospital), and MacFee (Manhattan Veterans Administration Hospital).

ELECTIVES

Elective work is available by arrangement with the Associate Dean and the departmental chairman.

UROLOGY

Given by the Department of Urology of the
Post-Graduate Medical School

Robert S. Hotchkiss, B.S., M.D., *Professor and Chairman of the Department*
Herbert Brendler, A.B., M.D., *Associate Professor*
Thomas F. Howley, A.B., M.D., *Associate Clinical Professor*
Dean Makowski, A.B., M.D., *Associate Clinical Professor*
Bernard D. Pinck, A.B., M.D., *Associate Clinical Professor*
George W. Slaughter, A.B., M.D., *Associate Clinical Professor*
Seymour Wilhelm, B.S., M.D., *Associate Clinical Professor*
Pablo A. Morales, M.D. [PHILIPPINES], *Assistant Professor*
Adrian W. Zorziotti, M.D., *Assistant Professor*
Allen Abrahams, B.S., M.D., *Assistant Clinical Professor*
Alvin C. Drummond, A.B., M.S., M.D., *Assistant Clinical Professor*
Irving M. Schneider, B.S., M.D., *Assistant Clinical Professor*
John M. Silberblatt, A.B., M.D., *Assistant Clinical Professor*
James F. Sullivan, A.B., M.D., *Assistant Clinical Professor*
Aaron H. Ulm, B.S., M.D., *Assistant Clinical Professor*
Joseph F. Speyer, B.S. (CHEM.), PH.D., *Instructor in Urology (Biochemistry)*
Alexander C. Mitchell, A.B., M.D., *Instructor in Clinical Urology*
S. Sym Newman, M.D., *Instructor in Clinical Urology*
Richard D. Amelar, A.B., M.D., *Clinical Instructor*
Ira J. Holzman, A.B., M.D., *Clinical Instructor*
Joseph J. Jaksy, M.D. [KOMENSKY], *Clinical Instructor*
Robert Lucey, A.B., M.D., *Clinical Instructor*
John J. O'Connor, Jr., M.D., *Clinical Instructor (Physical Medicine and Rehabilitation)*
Frank S. Schreder, DOC. DER MED. [WÜRZBURG], *Clinical Instructor*
Ira A. Wasserberg, A.B., M.D., *Clinical Instructor*

FIRST YEAR

Correlation lectures are given to emphasize principles presented in the basic science courses. The application of this knowledge is demonstrated by its utilization in the diagnosis and treatment of patients.

SECOND YEAR

Lectures and patient demonstrations in the special techniques of examination of the patient as related to urology are offered during the third trimester of the second year.

THIRD YEAR

Clinical instruction on the ward is given in conjunction with the Department of Surgery. Problems involving the genitourinary organs of surgical patients are discussed with small groups of students each week.

FOURTH YEAR

Elective courses are offered for periods of one or two months. Clinical clerkships are available on the wards and in the outpatient clinic of Bellevue Hospital and/or clerkship on the Urological Service of University Hospital.

Students may elect to perform supervised research in the Research Laboratories in the Medical Science Building. The period extends over one to two months.

How to Reach the New York University-Bellevue Medical Center

LEXINGTON AVENUE (Interborough) SUBWAY (IRT)—Local to 33d Street Station. Walk east to First Avenue.

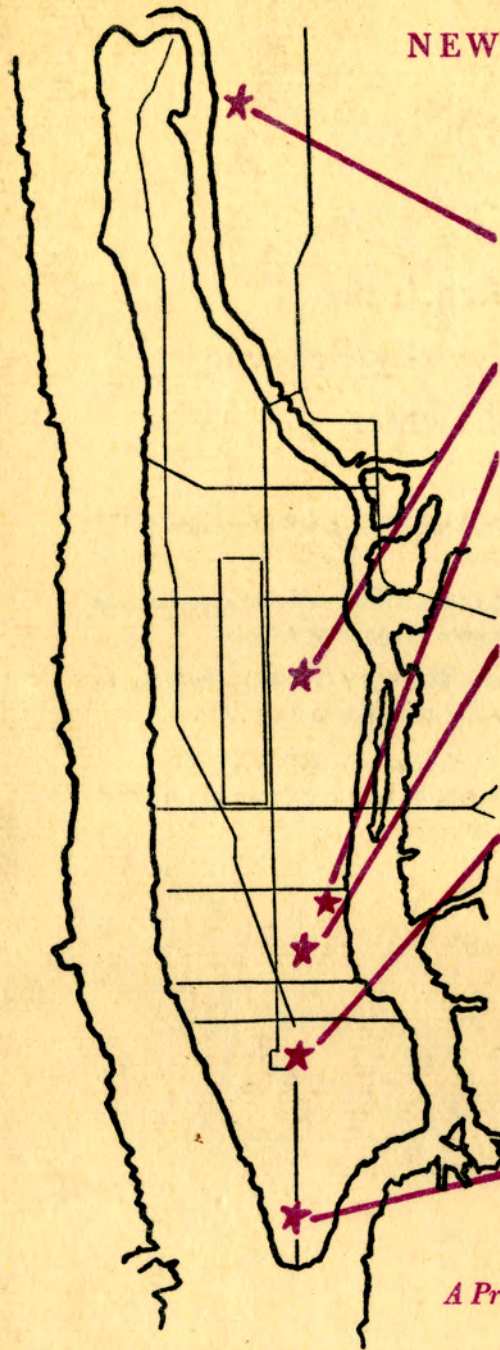
SEVENTH AVENUE (Interborough) SUBWAY (IRT)—Express to 33d Street Station. Walk east or take crosstown bus to First Avenue.

BROADWAY (Brooklyn-Manhattan) SUBWAY (BMT)—Express to 34th Street Station. Walk east or take crosstown bus to First Avenue.

SIXTH OR EIGHTH AVENUE (Independent) SUBWAY (IND)—Express to 34th Street Station. Walk east or take crosstown bus to First Avenue.

NEW YORK UNIVERSITY

Location of Centers



UNIVERSITY HEIGHTS CENTER
181ST STREET AND UNIVERSITY AVENUE
University College of Arts and Science
College of Engineering

INSTITUTE OF FINE ARTS
17 EAST 80TH STREET

NYU—BELLEVUE MEDICAL CENTER
550 FIRST AVENUE
College of Medicine
Post-Graduate Medical School
University Hospital
Bellevue Schools of Nursing

DENTAL CENTER
209 EAST 23D STREET
College of Dentistry
Dental Clinic
The Murry and Leonie Guggenheim
Foundation Institute for
Dental Research

WASHINGTON SQUARE CENTER
School of Commerce, Accounts, and
Finance
School of Education
Division of General Education and
Extension Services
Graduate School of Arts and Science
Graduate School of Public Administration
and Social Service
School of Law
School of Retailing
Washington Square College of Arts and
Science

**GRADUATE SCHOOL OF
BUSINESS ADMINISTRATION**
90 TRINITY PLACE

A Private University in the Public Service